

SCHOOL BUS

spotlight

on Grand Haven Area Public Schools

Vol. 23 No. 1

Welcome Back!

by Keith Konarska, Superintendent



Welcome back to a new and very exciting school year! We have so much to look forward to and to be proud of as a school district and a community.

We celebrate the successful completion of our nearly \$30 million energy, safety and technology bond projects. All of our school buildings now have updated climate control systems that includes windows, doors, boilers, carpeting, paint, ceiling tile, and lighting, just to mention a few. These upgrades will keep our infrastructure and learning environments in excellent shape for many years to come. In addition, computer upgrades, interactive whiteboards, instant response systems and expanded portable laptop labs are in all of our buildings, providing our students and staff the tools needed in today's learning environment. Heartfelt gratitude to our community that, time and time again, supports our district!

Instructionally, this is a very exciting time as we embrace the reconfiguration efforts that have realigned our elementary buildings to a Young Fives/K-4 structure that includes all-day Young Fives/Kindergarten programming and expanded early childhood offerings. Our realigned middle schools offer grades 5-6 at White Pines and grades 7-8 at Lakeshore. Both sites have carefully repurposed space to better meet the needs of students without the increased cost of expanding square footage of our operational footprint. Equally exciting is the launch of our new cyber school component,

which creates another alternative path for students to be successful. In addition, both Grand Haven High School and Central High School continue to embrace excellence through collaboration with several community partners who support key initiatives such as Capturing Kids Hearts, Tri-Cities College Access Network (TCAN), and business education partnerships. All of these initiatives positively position our district to help students meet the challenges of the new common core and ever increasing expectations.

Financially, although school funding remains comparable to the 2005-2006 levels, we have again managed to avoid major staff reductions, and have actually added over 20 new teachers this summer to meet our student needs. This was only possible because of incredible staff members who have taken on increased responsibilities, shared in the cost of benefit packages, and out-of-the-box thinking that has created alternative revenue sources as well as reduced expenditures to keep our programs intact. Our employees are a very special group that we can all feel fortunate to have supporting our children.

Can we top the incredible successes of this past year?
I believe we can.

Looking forward to another great year!

Bus Schedule
pp. 10 – 16

CABINET



Keith Konarska
Superintendent
616.850.5015
konarska@ghaps.org



Scott Grimes
*Asst. Superintendent
Human Services*
616.850.5000
grimess@ghaps.org



Mary Jane Evink
Curriculum Specialist
616.850.5075
evink@ghaps.org

SCHOOL BOARD



Chris Houghtaling
President
616.846.2323
caoughtaling@gmail.com



John Siemion
Vice President
616.402.3351
john@siemion.com



Joanne Query
Secretary
616.842.7024
jmquery@yahoo.com



Carl Treutler
Treasurer
616.842.0802
ctreutler@vtllaw.com



Christine Baker
Trustee
616.846.6381
bakerc52@gmail.com



Dave Davis
Trustee
616.846.1206
racndave@charter.net



Caralee Nietering
Trustee
616.842.8235
cnietering@gmail.com

BOARD MEETING SCHEDULE

All meetings begin at 7:00 p.m., are taped by GHTV, and aired the week following the meeting date. For meeting agendas and minutes, please visit www.ghaps.org/content/board-education

Date	Location
Monday, August 13	Education Service Center
Monday, September 10	Education Service Center
Monday, October 15	Peach Plains Elementary School
Monday, November 5	Lake Hills Elementary School
Monday, December 3	Griffin Elementary School
Monday, January 14	Grand Haven High School
Monday, February 18	Rosy Mound Elementary School
Monday, March 4	Central High School
Monday, May 6	Lakeshore Middle School
Monday, May 20	Ferry Elementary School
Monday, June 3	White Pines Middle School
Monday, June 17	Education Service Center
Monday, July 8	Education Service Center

Board of Education Retreat/Work Sessions have been scheduled as follows:

Friday, September 28 / 8:15 am / GH Community Center
Friday, April 19 / 8:15 am / GH Community Center

MISSION STATEMENT

The Grand Haven Area Public Schools are committed to the expectation that all students will learn. It is our obligation to provide each student in our community with a positive environment for learning so they will experience success and realize their fullest potential. This school district accepts the responsibility to work in partnership with the community to provide an excellent education that will prepare all learners for the challenges of a changing global society.

Grand Haven Area Public Schools does not discriminate on the basis of race, color, religion, sex, national origin, age, height, weight, marital status, handicap, disability, or limited English proficiency in any of its programs or activities. The following office is designated to handle inquiries regarding the nondiscrimination policies: Assistant Superintendent of Human Services, Grand Haven Area Public Schools, 1415 Beechtree St., Grand Haven, MI 49417, 616.850.5000.

IN THIS ISSUE

- 2** Board of Education Members & Meetings
- 3** Names and Numbers/District Calendar
- 4** Food Service
- 5** Preschool/Child Care
- 6** School Closing Information
Asbestos-Pesticide
- 7** Aquatics
- 8** NORA
- 9-16** Transportation/
Bus Schedule

Spotlight is a publication of the Grand Haven Area Public Schools Communications Department. For questions or comments please contact Ann Haruki-Shelton at 616.850.5065 or e-mail sheltona@ghaps.org.

District Names and Numbers

General Information	850.5000	Special Education	850.5140	White Pines Middle School (5-6)	850.6300
Fax Number	850.5010	Kate Augustyn, Director Keely VanDort, Secretary		Mike Shelton, Principal Bob Coyne, Assistant Principal Deborah Spetoskey, Secretary	
Superintendent	850.5015	Technology Services	850.5040	Attendance	850.6350
Keith Konarska		Doug Start, Coordinator	850.5040	Open Door	850.6375
Tina VanderWall, Secretary		Mary Jo Ortquist, Help Desk	850.5090		
Human Services	850.5000	Kathy LeMieux, Secretary		Lakeshore Middle School (7-8)	850.6500
Scott Grimes, Assistant Superintendent				Kevin Polston, Principal Amanda Sorrelle, Assistant Principal Kim Boersema, Secretary	
Instructional Services	850.5075	Transportation	850.5150	Attendance	850.6550
Mary Jane Evink, Curriculum Specialist Barb Lulofs, Secretary		Rod Jonas, Director Bev Traxler, Secretary			
Adult Education & GED	850.6880	Ferry Elementary School	850.5300	Central High School	850.6800
Paul Kunde		Steve Avram, Principal Katherine Saurbaugh, Secretary Open Door	850.5375	Paul Kunde, Principal Gwen Lemkuil, Secretary Open Door	850.6875
Business Services	850.5029	Griffin Elementary School	850.5500	Grand Haven High School	850.6000
Donna Bylenga, Director		Debra Mann, Principal Dawn Kelley, Secretary Open Door	850.5575	Tracy Wilson, Principal Mike Roberson, Assistant Principal Pam VanderKamp, Assistant Principal Denise Sabo, Secretary	
Child Care	850.6828	Lake Hills Elementary School	850.5600	Robin Bye, Athletic Coordinator Rita Way, Athletic Secretary	850.6030
Kelly Stafford, Coordinator		Jason Lawson, Principal Anita Dusnik, Secretary Open Door	850.5675	Attendance	850.6009
Community Pools	850.6292	Mary A. White Elementary School	850.5700	Student Services	850.6020
Rod Jonas		Valerie Livingston, Principal Rose Stone, Secretary		Vocational Office	850.6023
Communications	850.5065	Peach Plains Elementary School	850.5800		
Ann Haruki-Shelton, Director Dennis Threadgill, GHTV Coordinator/PAC		Kate Drake, Principal Cherie Reiss, Secretary Open Door	850.5875		
Cyber School	850.5020	Robinson Elementary School	850.5900		
Paul Kunde		Jeff Marcus, Principal Nancy Corbett, Secretary Open Door	850.5975		
Food Service	850.6080	Rosy Mound Elementary School	850.6700		
Mary Darnton, Director Betsy Sleva, Secretary		Kevin Blanding, Principal Amy DePree, Secretary Open Door	850.6775		
Information Services	850.5024	The Voyager School	850.5300		
Lisa Danicek, Director Cindy Benson, Coordinator		Steve Avram, Principal			
Operations	850.5120				
Ted Rescorla, Director Rod Jonas, Assistant Director Rita Scalici, Secretary					
Preschool Programs	850.6825				
Jennifer Bates, Secretary					
Recreation Program	850.5125				
Jill Vander Stel, Coordinator Liza Dora, Assistant					



**Grand Haven Area
Public Schools**

CORE VALUES

Culture of CARING

DEDICATED to success for all

Commitment to BEST PRACTICE

PROFESSIONAL excellence

HIGH EXPECTATIONS

for self and others

BRAND PROMISE

Provide exemplary programs and opportunities to meet the diverse needs of our students

2012-2013 Food Service

Dear Grand Haven Area Public Schools Families:

The USDA has recently issued new school meal requirements for the National School Lunch and Breakfast Program. These standards will be effective for the 2012-2013 school year. This means Grand Haven's students will see some changes next school year in the foods served at school. Chartwells School Dining Services manages the Food Service Department at GHAPS and has already begun incorporating several positive initiatives that will allow a smooth transition to the new meal requirements.

Your child(ren) will experience the new USDA requirements when they dine in their school cafeteria. One vital change is the requirement for a child to select at least 1/2 cup of fruit or vegetable to make up a complete meal. There are five food groups to select foods from: fruits, vegetables, protein, whole grains, and milk. Student meals must contain at least a selection of three of the five food groups with one being the fruit and/or vegetable selection. If no fruit or vegetable is selected, the student will pay the individual item prices for foods instead of the complete meal price. Here is an overview of what your child(ren) can expect to see in their school dining center at GHAPS.

Increase In Fruits and Vegetables

- In the upcoming school year, all students will be offered double the amount of fruits and vegetables with meals.
- Colorful fruits and vegetables provide essential vitamins and minerals important for growth and development during childhood.
- We offer a large variety of nutrient dense fruits and vegetables, including dark greens, orange starchy vegetables, and legumes.
- Students will now be required to select at least 1/2 cup of fruit or vegetable for their meal to be considered a complete meal or will be charged individual item prices.

Allowable Grains and Proteins

- Menus will offer specific amounts of whole grains and proteins that meet the requirements.
- For some breads and meats students might see smaller size portions.
- We already offer a variety of whole grains like our proprietary whole-grain pizza crust- PIZZAM!, rolls, muffins, pancakes, waffles, and whole-grain/reduced sugar cereals.

Lower Sodium

- We continue to work with food manufacturers to reformulate food products including lower sodium sauces and spreads.
- Chartwells' chefs and registered dietitians continually create tasty new recipes that use non-salt seasonings and herbs to replace and reduce salt.

Reduced Fats

- We only serve food products and ingredients that contain zero grams of trans fats per serving, and we encourage the use of healthy fats and oils.
- It is important to limit unhealthy fats such as saturated and trans fat because eating too many can lead to heart disease and high cholesterol, as well as other chronic diseases.

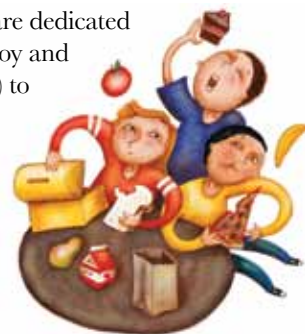
Menus by Age Groups

- New grade groups for menu planning will be aimed at ensuring students receive age-appropriate portions and nutrients.
- Changes in specific serving sizes might mean some smaller portion sizes on some items like burritos, wraps, sub sandwiches, hot meat sandwiches, calzones/strombolis, and pasta dishes.

As a USDA National Strategic Partner, Chartwells School Dining Services consistently meets or exceeds many of the new requirements for school meals. For instance, earlier this year, Chartwells introduced a new white whole wheat pizza crust, used at the Middle Schools and High School. The pizza crust, called PIZZAM!, which is proprietary to Chartwells, is a highly nutritious, top quality crust that contains very unique ingredients such as flax seed, a source of heart-healthy omega-3 fatty acids as well as olive oil. The USDA requires foods that contain zero trans-fats per serving, which has been met with the use of olive oil and flax seed. The pizza also is leavened with natural yeast and without the use of chemicals, high fructose corn syrup, artificial flavors or colors.

Additionally, the new regulations require that half of grains offered at lunch be whole grains. The new pizza crust is made with 51 percent white whole wheat, and it is a whole grain food. The new standards require schools to significantly lower sodium in menus, and this new pizza crust is 25 percent lower in sodium than traditional crust, and more importantly still tastes great according to our students.

Both Chartwells and Grand Haven Area Public Schools are dedicated to providing quality nutritious meals that students will enjoy and choose to eat. We hope you will encourage your child(ren) to try new fruits and vegetables. ***If you have questions or concerns, please feel free to contact us at 616-850-6080 or via email at foodservice@ghaps.org. We encourage you to see what's on the school's menu.***



Look for Food Service at Give & Take at Lakeshore and White Pines as well as all High School Orientation Days in August. Check out our website as we get closer to the start of school for menus and information.

Prices for 2012-13:

Elementary Lunch:
\$2.25
Middle School & High School Lunch:
\$2.50
Breakfast (all schools):
\$1.25
Milk: \$0.50

Our on-line services:

- SendMoneyToSchool.com: Check your child's meal history and purchases, and make deposits to their food service account on the Internet using SendMoneyToSchool.com.
- LunchApp.com: Fill out your application for Free and Reduced Meal Benefits on-line using www.LunchApp.com. When using this site you will no longer need to send in the paper application and in most cases your approval will be in one business day or less.
- Low balance email reminders: We can now send an email reminder when your child's lunch balance is low. Contact us by email at foodservice@ghaps.org and tell us your email address and your students' names, or call our office at 616-850-6080.

Please visit our website at www.ghaps.org/foodservice for more information about our program!!



Preschool / Child Care / Special Education Availability

Great Start Readiness Program

The Great Start Readiness Program is a free preschool program funded by the state of Michigan. Great Start Readiness uses Creative Curriculum, a research-based early childhood curriculum that allows teachers to focus on children’s strengths and individual needs. This program is available to students who are age four by December 1, and is housed at Mary A. White and Peach Plains schools. There are 16 students per class, one morning and one afternoon session, and has one teacher and one assistant per class. Great Start Readiness teachers are certified with degrees in Early Childhood Education. Program enrollment is based on family income as well as other criteria. **For more information contact 616.850.6825.**

Early Childhood Special Education

The Early Childhood Special Education (ECSE) Program emphasizes working with students with disabilities to help them become prepared for kindergarten and the rest of their school career based on their individual needs. There is an emphasis on speech and language, socialization, and working toward appropriate academic skills using scientifically-based curriculum and interventions. A speech pathologist, physical therapist, occupational therapist, psychologist, and social worker are also on staff. The average age student involved is three through five-years-old. There are 12 students per classroom, one teacher, and up to two assistants per section. ECSE is housed at Mary A. White School. **For more information contact 616.850.5140.**

Developmental Preschool

The Developmental Preschool Program is a tuition-based program available to students ages two-and-a-half to five-years-old. This program is attuned to current trends in early childhood education and provides developmentally appropriate learning that is connected to the K-12 curriculum. The goal is to prepare children through the creative use of activity centers for successful entry into kindergarten. There are 18 students per class, one teacher and one assistant per class. Developmental Preschool is available at Central, Griffin, Lake Hills, Robinson and Rosy Mound schools. Scholarships are available based on income. **For more information contact 616.850.6825.**

Head Start

The Head Start Program prepares children to be successful in kindergarten through the use of hands-on experiences and activities within the research-based Creative Curriculum program. There is an emphasis on all aspects of development (social-emotional, physical, cognitive, and fine motor skills) as well as the individual’s strengths and needs. Head Start is available to three and four-year-olds, and is housed at Central School. There is a food service person and Family Services Advocate. There are 17 children per class, two classes with one teacher and one assistant per class. Program enrollment is based on family income as well as other criteria. **For more information contact 616.850.6825.**

Eligibility for special education services

Upon request, Grand Haven Area Public Schools is required to evaluate a child for eligibility for special education services. A request for evaluation is known as a referral. When the district receives a referral, the district will appoint an Individualized Education Program (IEP) team to determine if the child has a disability and if the child needs special education services. The district locates, identifies, and evaluates all children with disabilities who are enrolled by their parents in private (including religious) schools, elementary schools and secondary schools located in the school district.

A physician, nurse, psychologist, social worker, or administrator of a social agency who reasonably believes a child brought to him or her for services is a child with a disability has a legal duty to refer the child, including a homeless child, to the school district in which the child resides. Before referring the child, the person making the referral must inform the child’s parent that the referral will be made.

Others, including parents, who reasonably believe a child is a child with a disability may also refer the child, including a homeless child, to the school district in which the child resides.

Referrals must be in writing and include the reason why the person believes the child is a child with a disability. A referral may be made by contacting Kate Augustyn, Director of Special Education, Grand Haven Area Public Schools, at 616. 850.5142, or by writing a FERPA notification at 1415 Beechtree, Grand Haven, Michigan 49417.

Open Door Childcare Program

Open Door is a licensed childcare program designed to meet the needs of all children. We are conveniently located within most elementary schools for before and after school care.

Our caring staff strives to build self-esteem, creativity, and a fun filled atmosphere for children of all ages. Open Door is also available on snow, fog, in-service, half and vacation days!

Affordable.

Open Door offers half hour, hourly, daily, and weekly rates and multiple child discounts. We also accept payment by cash, check, debit, or credit card (Mastercard and Visa).

Flexible.

Schedule your child only for the hours you need care. All we ask is that your schedule be turned in by the Wednesday prior to needing care, along with payment.

Convenient.

Before (6:30-8:30 a.m.) and **after-school** (4:00-6:00 p.m.) care is available at Ferry (am only), Griffin, Lake Hills, Peach Plains, Robinson, and Rosy Mound elementary schools, White Pines Middle School and Central High School.

Prime-Time

Prime-Time is an extension of the Open Door childcare program, and is developed for children three-years-of-age through kindergarten, with the exception of the Central School site who take two-and-a-half-year-olds who are not yet potty trained. Early childhood teachers work with the children daily to help them prepare and flow into a school routine. Children of this young age need structure and encouragement. Staff provides this continuity along with meeting each child’s needs on an individual basis. Children learn and socialize with other children to create a positive feeling about school. **For more information contact 616.850.6825.**



School Closing Information/Procedures

School Closing Information

- Listen to 92.1 WGHN
- Watch GHTV (Channel 98) or all major television channels
- Visit the district website - www.ghaps.org
- Call the School Closing Line - 850.5100

School Closing Procedures

The safety of all children in the district is always a primary concern. The administration has consulted with emergency and police agencies in the development of these procedures to guard the safety and comfort of every child. It is important that parents know the district emergency school closing procedures, which are uniform in elementary, middle and high schools.

Delayed Opening

In some cases, such as fog or slippery roads, a temporary hazardous condition may exist and allow school to be in session after a "brief" waiting period in the morning.

Emergency Closing Before Starting Time (snow, ice, fog)

The decision to close schools because of weather is made in cooperation with state, county and local authorities. The decision is normally made prior to 5:30 a.m. However, in case of rapidly changing weather conditions, the decision could be made later.

Early Dismissal After School is in Session

When inclement weather begins to build up during the school day, the administration may dismiss school early. When school is cancelled, local radio stations will be notified. Buses will start their runs early so that special education and elementary students can be delivered home as soon as possible. Parents are encouraged to make advanced plans for the care of students in this circumstance.

Mechanical Failure

If it is determined that a mechanical failure cannot be repaired within an appropriate time, classes will be cancelled for the remainder of the day. Students will be returned home after morning transportation runs have been completed or as early as it is feasible to obtain bus transportation. It is imperative that parents discuss the possibility of early dismissal thoroughly with their children and make certain they know where to go if parents are not at home.

After-school Activities

Activities scheduled after the end of the school day will be cancelled if the safety and well-being of students and staff are jeopardized. The responsible administrator(s), in consultation with other appropriate officials (e.g. National Weather Service officials, Civil Defense officials, appropriate law enforcement agencies, etc.), will determine whether conditions require the cancellation of such activities.

Tornado Conditions

While a tornado is not a frequent occurrence, each school conducts tornado drills routinely so that all children are familiar with the procedure. Each building is in direct radio communication with the National Weather Service and is provided advance notice of tornado conditions.

Tornado Watch

In the event of a tornado watch (conditions capable of producing a tornado), we are notified immediately by law enforcement authorities and are provided continuous up-to-the-minute reports on condition changes in our area. Parents are asked not to telephone the school during such time, as it is imperative that telephone lines be kept open to relay emergency instructions from authorities. Should a tornado watch be in effect at school dismissal time, students will be released to go home in the normal manner. There may be times when athletic, co-curricular, and recreational programs will be canceled if the watch is still in effect.

Tornado Warning

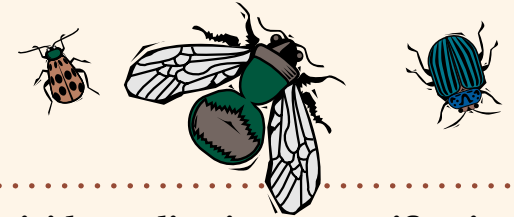
Students will not be sent home if a tornado is sighted in the area. Immediate safety measures will be taken; students will remain at emergency stations until the district is notified that the danger is past. Parents are urged to leave their children in the safety of the school building when a tornado warning (sighting) is in effect. We agree with Civil Defense authorities that children are safer in school than they would be traveling home from school. If you must pick up your child, do not telephone; go to the school office and arrange to have your child released to you. Do not ask an older child or neighbor to pick up your child, as school authorities will release a child only to parents. Your cooperation is appreciated in helping to ensure the safety of your youngsters during emergency situations. Your observance of these procedures will enable us to achieve our common goal of safety for every student.

Asbestos Plan Available for Review

Grand Haven Area Public Schools has conducted an extensive asbestos survey of all its buildings. Based on the findings of this inspection, a comprehensive management plan has been drafted. This plan details the response actions that the district will be taking regarding asbestos-containing materials found in its buildings.

This plan is available for inspection at the Education Service Center (1415 Beechtree) during normal business hours. If you desire to have a personal copy, please notify Ted Rescorla, Director of Operations, and a copy will be supplied to you at a cost of \$1 per page within five working days.

We have endeavored to make our schools a safe place in which students can learn. Our procedures for dealing with this problem reflect that concern. If you have any questions, please contact 850.5120.



Pesticide application pre-notification

GHAPS has adopted an integrated pest management program (IPM). Inherent with this are the district's efforts to reduce pesticide use as much as possible. While it may occasionally be necessary to apply a pesticide, it will only be used as a last resort.

You have the right to be informed prior to any pesticide application that might be needed in your child's school. In an emergency, pesticides will be applied without prior notice, but you will be provided notice following any such application. To receive notification, please complete the following information. If the form is not returned we will assume you do not want to be notified. Should you have questions or concerns at any time, please contact Ted Rescorla at 850.5120.

Please return the form to your child's school building.

School: _____

Parent/Guardian: _____

Student Name: _____

Address: _____

Home Phone: _____

Work Phone: _____

Please circle the appropriate response:

- No, I **do not want to be notified.**
- I want to be notified whenever **any scheduled major pesticide application** is made.
- I want to be notified even when an ant trap, small bait application, or other least-toxic application is made.

Parent's Signature: _____

Date: _____

2012 Community Aquatics Center

The Aquatic Center may need to be closed at times due to maintenance, athletic events or severe weather. **Check to make sure the pool is open before dropping off your swimmers.** Call the Aquatic Center (616.850.6292) for pool closing information or the Aquatic calendar at www.ghaps.org/aquatics

Starting September 4 ADULT / LAP SWIM

M-F	5:45 am-9:00 am	Both Pools
M-F	11:00 am-2:00 pm	Main Pool
M-F	12:00 pm-2:00 pm	Family Pool

Starting September 4 OPEN/LAP SWIM

An adult must accompany all non-swimmers and children under 11 years old.

M-W-F	7:30-9:00 pm	Both Pools
(Closed 9/14, 9/28, 10/12, 10/19 for home Football Games & 8/4, 8/18, 8/24, 9/7, 9/8, 10/12, 10/13, 10/29, 10/30 for WP & Swim Meets)		
Sat.	1:00-5:00 pm	Both Pools
Sun.	2:00-5:00 pm	Both Pools

PRIVATE & SEMI-PRIVATE SWIM LESSONS for CHILDREN & ADULTS

Five (5) - ½ hour lessons (2 ½ hours total). Call: 616.850.5126 for more information. (Per student within same family)

Private Instruction:	1 child or adult \$85
Semi-Private:	2 children \$75
	3 children \$65
	4 children \$55

Lap/Open Swim Costs

Children	Daily-Yearly
Senior Citizens	\$3.00/\$50
Adult	\$3.00/\$50
Family	\$4.00/\$125
	\$8.00/\$250

GIRLS MIDDLE SCHOOL SWIM TEAM Season begins Oct. 22 – Dec. 14

- Sign up in advance at your Middle School Office.
- Practices are at the GH High School Aquatic Center.

SWIM INSTRUCTION

September 15 – November 17, Saturday

(no class 10/13, 10/27), Family Pool
\$45 Res./\$55 Non-Res. 8 weeks

• Backpack Class	8:30-9:00 am
• Level 1	9:00-9:30 am
• Level 2	9:30-10:15 am
• Level 3-4	10:15-11:00 am
• Level 5-8	11:00-11:45 am

PARENT-TOT

Designed for children 3 months to 5 years of age. Parent must accompany child(ren).

September 15 – November 17, Saturday

(no class 10/13, 10/27), Family Pool

3 mo.- 3 yrs	10:30-11:00 am
3-5 yrs	11:00-11:30 am
Family Pool	8 weeks
\$45 Resident/\$55 Non-Res.	

Multi Family Discount: \$5 per child

Backpack Class—Family Pool-Ages: 3-5+

Must have passed Parent-Tot Class.

- **Level 1**—Family Pool - 5 years old+
Minimal use of flotation devices. Must be comfortable under water/getting face wet .
- **Level 2**—Family Pool – Ages 6+
Able to swim short distance unassisted, needs stroke work. Aux Pool
- **Level 3**—Main Pool - Ages 6+
Must be comfortable in all deep pool and be able to swim 15 yards on stomach and back unassisted.
- **Level 4-8**—Main Pool - Ages 6+
This will be a progressive class. Students will be in sections and advance according to their abilities. Must be able to swim 25 yards (width of pool) on stomach and back unassisted. This class will work on stroke development, stand-up dives, flip turns, rescue techniques.

Winter Age-Group Swim Team

Detailed Flyers will be posted at the Aquatic Center
Or watch our website at: www.ghaps.org/aquatics

Planning a Party?

Rent the Aquatic Center!

Rental Rates:

Small Pool:	\$50/hour
Main Pool :	\$115/hour
Both Pools:	\$150/hour
Lobby:	\$25/hour

Call Rita to set up
date and time.
616.850.5126

ARTHRITIS WATER EXERCISE

Open to all ages to improve range of motion and joint movement, to help maintain and/or increase strength of the muscles and endurance. Royce McCastle

Session 1 Aug. 28 - Oct. 18

Session 2	Oct. 23 - Dec. 20 (no class 11/20 & 22)
Family Pool	T/Th 10-11 am (NEW TIMES)
Family Pool	T/Th 11 am - Noon
\$45 Resident/\$55 Non-Res. 8 weeks	

AQUA-DYNAMICS

Adult water exercise class designed to improve strength, flexibility and fitness.

Session 1 Aug. 27 - Oct. 19 (no class 9/3)

Session 2 Oct. 22 - Dec. 21 (no class 11/19-23)

Family Pool	M/W/F	9-10 am
\$65 Resident/\$75 Non-Res.		3 x per week
Instructor Donna Francik		
Family Pool	T/Th	9-10 am (NEW TIME)
\$45 Resident/\$55 Non-Res.		2 x per week
Instructor Mary Hinchman		

AQUANASTICS

Adult water exercise class designed for both the swimmer & non-swimmer to improve flexibility, strength and fitness.

Session 1 Aug. 28 – Oct. 18

Session 2 Oct. 23 - Dec. 20 (no class 11/20 & 22)

Family Pool	T/Th
5:30-6:30 pm	Rita Scalici
6:30-7:30 pm	Sandy Jonas
\$45 Resident /\$55 Non-Res. 8 weeks	

REFUND POLICY

- A full class refund will be issued if the Aquatic Dept. cancels a class due to low enrollment, lack of instructor, etc.
- A full refund less a \$5 processing fee will be issued if participant cancels before class begins.
- No Refund will be issued if you cancel/cannot attend class once it has begun.
- A \$15 fee will be charged for all returned checks.

MUST REGISTER IN ADVANCE

For more information and to register call Rita @ 616.850.5126

Mail in, walk in or call - Visa/MasterCard
Make checks payable to the "GH Aquatics"
1415 Beechtree St., Grand Haven, MI 49417
Be sure to visit our website at:
www.ghaps.org/aquatics

1415 Beechtree St. • Grand Haven, MI 49417 • 616.850.5125 www.ghaps.org/nora



Keep your kids
moving with
Chiropractic!

Bring this ad in
with proof
of participation in a



Program and
receive a

**\$19 consultation,
exam and
adjustment.***

*Expiration: June 1st, 2013
Excludes Medicare and
Medicaid.

Levi J. Pulver, DC
17208 Van Wagoner Rd
Spring Lake, MI 49456
616.604.0744

www.pulverchiropractic.com



BASKETBALL

ADULT OPEN BASKETBALL
Saturdays Year Round
12:00-2:00 pm
Lakeshore Middle School
\$3/visit Resident, \$5/visit Non-Resident

BOWLING AT STARLITE LANES

ELEMENTARY AFTER SCHOOL BOWLING
Grades K – 4 Boys & Girls
Thursdays, November 8 – December 20 (Not 11/22)
4:15pm-5:30pm
\$42 Resident/\$57 Non-Resident

MIDDLE SCHOOL BOWLING LEAGUES
Tuesdays, November 6 – December 18 (Not 11/20)
Grades 5-6 Boys & Girls
4:15pm-5:30pm
Grades 7-8 Boys & Girls
3:15pm-4:15pm
\$42 Resident/\$57 Non-Resident

CHEERLEADING/DANCE/GYMNASTICS

CHEER AMERICA Ages 4 – 14
Questions call: Young Champions 800.940.7469
Thursday Nights starting September 27
Register on Site: September 27
Ages 4-9 6:00pm
Ages 10-14 7:00pm
Ferry Elementary
\$6/class and \$6 Registration Fee

PRE-SCHOOL DANCE (Ages 3-5)
BASICS IN BALLET (Grades K-2)
HIP-HOP: BASICS (Grades 3-4)
HIP-HOP: BASICS (Grades 5-6)
ADULT ZUMBA
Instructor: Simone Favor
8 class sessions/throughout school year
Central High School Gym
\$40 Resident/\$55 Non-Resident

TUMBLING & GYMNASTICS
Athletes in Motion USA 616.891.4445
Ages 4-5 5:30-6:15pm
Ages 6-7 6:15-7:00pm
Ages 8-12 7:00-7:45pm
Mondays, September 24– November 26 (Not 11/19)
Griffin Elementary
\$74 Resident/\$89 Non-Resident

CLINICS

YOUTH SPORTS INTRO.
3-6 year old Boys & Girls - 6 classes
Saturdays, September 22 – October 27
Lakeshore Middle School Aux. Gym
\$34 Resident/\$49 Non-Resident

Registration deadline one week prior to start of event. A \$10 fee will be charged for late enrollment. NORA reserves the right to cancel programs if the minimum enrollment is not achieved. Program dates are subject to change due to school calendar. Look for detailed flyers.

AFTER SCHOOL LACROSSE CLINIC
Coed Grades 3rd – 4th **PPlains, Rob. or RMound**
Coed Grades 5th – 6th **White Pines**
6 classes this Fall
4:00-5:00pm
\$34 Resident/\$49 Non-Resident

AFTER SCHOOL SOCCER CLINIC
Ages 3-4 3:00-3:45pm weekdays
or 9:00-9:45am Saturday mornings
Grades K – 4th 4:00-5:00pm **Elem. Schools fields**
Grades 5th– 6th 4:00-5:00pm **White Pines field**
6 classes this fall
\$34 Resident/\$49 Non-Resident

TENNIS CLINICS—Coach Chris Wilton
Grades K- 4th Boys & Girls **L Hills, RMound, PPlains**
Grades 5th- 6th Boys & Girls **White Pines**

SELF DEFENSE – Call for more details

OKINAWAN SHORIN-RYU Age 6 thru Adult
SANCHIN-RYU Age 5 and up
TAE KWON DO Age 10 thru Adult

YOUNG AMERICANS Age 4 – 14
Young Champions 800.940.7469
Registration: September 24
Register on Site 6pm
Mondays, starting September 24.
Central High School
\$6/class \$6 registration fee

VOLLEYBALL

ADULT OPEN VOLLEYBALL
Coed – Tuesdays – September 11
Men over 50 – Wednesdays – September 12
7:00-9:00pm
Lakeshore Middle School
\$3/visit Resident \$5/visit Non. Resident

SPECIAL EVENTS

ATV/QUAD SAFETY CERTIFICATION
Saturday in October. Date to be determined.
9:00am-2:00pm. Bring a sack lunch.
Grand Haven Twp. Fire Barn
\$5 Resident/\$20 Non-Resident

SNOWMOBILE SAFETY CERTIFICATION
Saturday in December. Date to be determined.
9:00am-2:00pm. Bring a sack lunch.
Grand Haven Twp. Fire Barn
\$5 Resident/\$20 Non-Resident

NFL - PUNT, PASS & KICK COMPETITION
Boys & Girls Ages 6-15
Sunday, September 9 - **Lakeshore Football field**
1:30pm Registration / 2:00 pm Event Begins
Free event! Reg. on site, bring birth certificate.

COED PIRATE/BUCCANEER PARTY
Grades K-3 Boys & Girls
Tentative date: Saturday, September 24
1:00-2:30pm
Lakeshore Middle School Caf 
\$19 Resident/\$34 Non-Resident

DRAWING FOR KICKS - CARTOONS
Ages 8-12 Boys & Girls
Kevin Collier, Tribune Art Director
Tentative date: Saturday, October 20
9:30-11:30am
Lakeshore Middle School Cafeteria
\$15 Resident/\$30 Non. Resident

ROCK-N-BOWL
Grades K-8 Boys & Girls
Saturday, October 20
Adult/Child team - 1:00– 2:45pm
Starlite Bowling Lanes
\$28 Resident/\$43 Non. Resident

MOMS/ SONS WESTERN RODEO
Boys Grades K-5
Tentative date: Thursday, November 8
6:15-8:00pm
White Pines Middle School Caf 
\$25 Resident Pair/\$40 Non-Resident Pair

ADULT LEAGUES
Fall Coed Volleyball
Call NORA for more details 850-5125.

CHRIS CHRISTIANSEN YOUTH SCHOLARSHIP FUND
This fund was established for the purpose of providing youth with special financial needs the means to participate in activities sponsored by the Northwest Ottawa Recreation Authority. Call 850.5125 for further information. Donations always accepted.

NORA is a cooperative effort sponsored by the Grand Haven, Grand Haven Twp., GHAPS, Ferrysburg, and Robinson Twp to provide quality recreation and leisure activities for our community and is administered by GHAPS.

- NORA Policies:
1. A \$15.00 fee will be charged for all returned checks.
 2. NORA reserves the right to cancel programs if the minimum enrollment is not achieved.
 3. Registration deadline one week prior to start of event.
 4. Late fee of \$10.00 will be assessed for late enrollment.
 5. A full refund will be issued if NORA cancels a class.
 6. A full refund less a \$5 processing fee will be issued if participant cancels at least 48 hours prior to the start of class.
 7. If cancellation is less than 48 hours of class beginning, a voucher for value of class will be issued less the \$5 processing fee. **VOUCHER CAN BE USED TOWARD ANY NORA CLASS, JUST LIKE CASH, BUT MUST BE USED WITHIN ONE YEAR.**
 8. **NO REFUND** will be issued if canceling on day of class.
 9. **NO REFUND** will be issued after class starts regardless of attendance.

NORA is enrolled in **Meijer Community Rewards**, our organization code is #238883.



SCHOOL BUS



Some of these operational guidelines will impact you directly and, therefore, are pointed out below:

Transportation

by Rod Jonas, Transportation Director

The staff of the Transportation Department is committed to safely transporting students to and from school and school-sponsored events. In providing this service, we are bound by set guidelines provided by the board of education. These guidelines define the level and limit of service that can be provided in keeping with cost-effective operation and services required to meet the educational needs of the school district's students.

- Students residing within one (1) mile of their schools are not eligible for transportation.
- A bus stop for a student eligible for transportation can be up to, but no further than, one (1) mile from his/her residence.
- Buses are to operate at maximum seat usage, but within the rated capacity of the bus by type.
- A student's riding time should not exceed one (1) hour.
- Transportation will not be provided for social activities (i.e. parties, social functions, go home with a friend, etc.)
- You must be at your bus stop five minutes prior to your scheduled pick-up time. Buses do not follow an exact time schedule due to varying traffic, weather and road conditions.
- Students suspended from school lose riding privileges for the duration of the suspension.
- School district transportation will not be used to transport students to or from work. With permission from parents and school administrators, students may get off their assigned buses at existing stops for the purpose of work.
- Items taken on the bus must be enclosed in a standardized tote bag or backpack. If your project or item that you need to get to school is too large for the backpack, you need to make arrangements to get to school or have the item dropped off at school for you.

Transfer policy: Transportation for school-of-choice transfer students within and from outside the school district is provided on a space-available basis. **To be considered, the following criteria must be met:**

1. Pick-up and take-home bus stops must be at existing stops along an existing route which services the school-of-choice area.
2. The bus stop requested must be within one (1) mile safe walking distance from the student's home or day care location.
 - If you live east of US-31 and are concerned about your student walking across US-31 to get to Lakeshore, please take a shuttle bus from either Ferry School (bus 53) or Second Reformed Church (bus 1).
 - If you live west of US-31 and are concerned about your student walking across US-31 to get to White Pines, please take a shuttle bus from Lakeshore (bus 11 in the a.m. / bus 51 in the p.m).
3. A "School of Choice Request for Bus Transportation" form has been submitted. This form is available at any Grand Haven Area Public Schools building.

To provide student transportation service in the safest possible manner is the highest priority of the Grand Haven Area Public Schools Transportation Department. In order to meet this objective, a system of rules and enforcement procedures has been developed to work toward the safety of all. (See column on right.)

When a disciplinary problem occurs, the driver will fill out a "Report of Misconduct on School Vehicles" form. Two copies go home to the parent, one copy to the Director of Transportation, and one copy goes to the school principal.

A set number of points are assessed for each rule violation and serve to determine the duration of suspension from bus riding privileges. When the period of suspension has been served, the student must return the pink copy of the form signed by a parent before he/she may resume riding the bus. Points are cumulative. Once 20 points have been accumulated, bus riding privileges are suspended for the remainder of the year.

Remember, bus transportation is a privilege. There is no requirement of law which mandates it be provided to you. It is a service we gladly provide to enhance the convenience of education for students and parents. What we ask in return is that students simply conduct themselves in a manner which is in keeping with the safety and due respect of others.

19 specific rules for riding the bus which all fall under two guiding precepts:
Your safety and the safety of others.
Respect for others

1. Be at assigned bus stop on time.
2. Not litter on the school bus.
3. Stay off the roadway: maintain proper conduct while waiting for or leaving a school bus.
4. Get on and off at the designated stop. Changes must be approved in writing by a school authority.
5. Not talk in a loud voice or shout or create any other disturbing noises.
6. Remain seated. The driver is authorized to assign seats.
7. Not eat or drink on the school bus without permission of the bus driver or teacher or chaperone.
8. Not use profane or vulgar language, or make obscene gestures.
9. Cross in front of the bus, not in back.
10. Keep head and hands inside the bus.
11. Not throw objects on the bus or out of the window of the bus.
12. Obey instructions of and show respect to the driver.
13. Not harass or bully others, or otherwise be unruly.
14. Not fight.
15. Not spit or bite.
16. Not damage or vandalize the school bus. Students will be required to pay for repair of damage.
17. Not possess or use flammable or explosive devices on the bus.
18. Not possess or use illegal / dangerous substances/ items on the bus.
19. Not possess or use tobacco products on the bus.

For more information, please contact the Transportation Department at 616.850.5150.



SCHOOL BUS



2012/13 Schedule

THIS SCHEDULE IS SUBJECT TO CHANGE

Quick Guide to bus numbers by neighborhood:

STOP	Elem.	WP	Secondary
Alpine Court Clubhouse	55	55	55
Cutter Park	57	57	57
Forest Park	13	13	13
Grand Haven Condos	51		5
Hamptons	9	12	50
Hunter Woods	57	57	57
Joyful Noise	11	11	11
Khardoma Lodge	11	11	11
Lakeview Apts.	45	45	45
North Shore Trailer Park	36	24	36
Pheasant Run	9	12	50
Pontaluna Shores 9	12	9	
Reserve	9	12	50
River Haven Trailer Park	1, 51	38, 51	3, 38, 51
Robbins Nest Apts.	6	6	6
Sandy Point Beach House	44	44	44
Shady Ridge	55	24	55
Shoreline Landing	50	12	50
TimberView Apts.	6	6	7, 12, 57,
Trapper Cove	45	24	45
Village Green	6	6	6
Whispering Woods	47	47	47
Woodland Ridge	55	24	36

Shuttle Bus Numbers

Central to High School	PM Bus 11
Ferry to High School	AM Bus 1
Ferry to Lakeshore	AM Bus 53
Ferry to White Pines	AM Bus 1
High School to Tech Center	AM Bus 21
High School to Central	AM Bus 6
High School to Ferry	PM Bus 1
High School to Lakeshore	PM Bus 11
High School to Timberview Apts.	PM Bus 12
High School to White Pines	PM Bus 6
Lakeshore to High School	AM Bus 11
Lakeshore to Ferry	PM Bus 53
Lakeshore to Timberview Apts.	PM Bus 7
Lakeshore to White Pines	PM Bus 51
White Pines to Ferry	PM Bus 1
White Pines to Lakeshore	AM&PM Bus 51
White Pines to High School	AM Bus 6
2nd Reformed Church to LS	AM&PM Bus 1

FERRY/GRIFFIN AREA SECONDARY AM/PM

#1 STOP	Mike Lonergan LOCATION	Ferry / Griffin AM	PM
1	1530 Waverly	6:47	3:10
2	Waverly & Friant	6:48	3:11
3	15884 Mercury Dr.	6:50	3:18
4	15328 Cherry St.	6:51	3:19
5	Cedar Ave & Apple St.	6:52	
6	16069 Delta View	6:53	
7	16168 Vandenberg Dr.	6:54	3:25
8	15703 Kitchel	6:54	
8 (p.m.)	15979 Cedar		3:20
9	Friant & Colfax	6:57	3:12
9 (p.m.)	160th & Delta View		3:21
10	1635 Pennoyer St.	6:59	3:13
11	Eastern & Grant St.	7:00	3:14
11 (p.m.)	15673 Kitchel		3:26
	Second Ref. Church	7:03	3:02
	Lakeshore	7:05	2:58
	Ferry (High Sch.)	7:10	2:53
	High School	7:20	2:30

#3 STOP	Jeri Scarth (River Haven) LOCATION	Ferry / Griffin AM	PM
1	Eastern & Pennoyer	6:48	3:13
1 (p.m.)	River Haven (office) Chill program		3:00
2	Friant & Colfax	6:50	3:10
3	River Haven-2nd ent./144th	6:56	3:02
4	13543 144th	6:57	
5	River Haven-4th ent./144th	7:00	3:05
6	144th & Brigham Woods Dr.	7:02	3:06
	High School	7:11	
	Lakeshore	7:20	
	St. Johns	7:26	

#6 Tiffany Strait(Village Green)Ferry / Griffin

STOP	LOCATION	AM	PM
1	168th & Village Green	6:50	3:00
2	168th & Robbins Nest	6:51	3:01
3	Robbins & Robbins Nest	6:53	3:05
4	Robbins & Village Gr/1st ent.	6:54	3:06
5	Robbins & Village Gr/3rd ent.	6:55	3:07
6	Robbins Rd. & Pine	6:57	3:08
7	Robbins Rd. & 163rd	6:59	3:09
8	Robbins Rd. & Coleman	7:01	3:10
9	Robbins Rd. & 161st	7:02	3:11
10	Robbins Rd. & David (NE)	7:03	3:12
11	Robbins Rd. & David (SE)	7:05	3:13
12	Robbins Rd. & 161st	7:06	3:14
13	Robbins Rd. & Coleman	7:08	3:15
14	Robbins Rd. & Clovernook	7:10	3:16
15	Moreland & Burgess	7:12	3:18
16	Moreland & Bluff Creek	7:14	3:19
17	Mercury & Pine St.	7:15	3:20
18	Mercury & Clovernook	7:16	3:21
19	Mercury & 161st	7:18	3:22
20	Mercury Dr & David	7:18	3:23
	White Pines	7:20	3:02
	Lakeshore	7:30	2:35
	High School	7:35	2:55
	Central HS	7:50	

#7 Greg VanCleave Ferry / Griffin

STOP	LOCATION	AM	PM
1	15795 Robbins Rd	6:50	3:00
1 (p.m.)	Griffin(just before Terrill St.)		2:50
2	Robbins Rd & Dermo	6:52	3:03
2 (p.m.)	Dunewood & Timberview		2:55
3	Robbins Rd. & 155th	6:53	3:04
4	Robbins & 154th	6:54	3:05
4 (p.m.)	Robbins & Vintage		3:01
5	152nd & Harry	6:55	3:07

5 (p.m.)	Robbins & Lost Channel	3:02
6	152nd & Cardinal	6:56 3:08
7	14749 152nd	6:57 3:09
8	Mercury Dr. & Meadowlark	7:00 3:11
9	15446 Mercury Dr.	7:01
10	Mercury Dr. & Jasmin	7:02 3:12
11	15729 Mercury Dr.	7:03 3:13
12	15837 Mercury Dr.	7:05 3:14
13	15851 Mercury Dr.	7:06 3:15
14	15907 Mercury Dr.	7:07 3:16
15	16043 Mercury Dr.	7:08 3:18
16	16143 Mercury Dr.	7:09 3:19
17	Mercury Dr. @ Ronny Rd.	7:10 3:21
18	Mercury Dr.@Grand Pt.	7:11 3:22
18 (p.m.)	15920 Mercury Dr.	3:18
19	1709 Waverly	7:13 3:24
	Lakeshore	7:17 2:35
	GH Christian	7:21 2:52
20 (p.m.)	Timberview Apts.	2:57
	High School	7:27 3:02

#57 Marlene Wilder Ferry / Griffin

STOP	LOCATION	AM	PM
1	15672 Lincoln	6:25	3:21
2	15434 Lincoln	6:26	3:22
3	Lincoln & Hunterswoods	6:27	3:23
4	14564 Lincoln	6:28	3:25
5	12663 144th	6:29	3:26
6	152nd & Glendora Pl.	6:33	3:30
7	12376 152nd	6:34	3:31
8	15339 Lincoln	6:36	3:33
9	15502 Woodrush	6:37	3:14
10	Woodrush/Woodrush Ct.	6:38	3:15
11	Woodrush/Acacia	6:39	3:16
12	15414 Sundew	6:40	3:17
13	13142 Acacia	6:41	3:13

FERRY/GRIFFIN AREA ELEMENTARY-WHITE PINES AM/PM

#1 Mike Lonergan (River Haven) Ferry / Griffin / WP

STOP	LOCATION	AM	PM
1	River Haven/Main ent.	7:52	4:17
2	River Haven 2nd ent.	7:54	4:19
3	River Haven 4th ent.	7:56	4:21
4	152nd(at crosswalk sign)	8:00	4:26
5	15277 Mercury	8:05	4:30
6	15837 Mercury	8:07	4:34
7	16143 Mercury	8:09	4:36
8	Friant & Grant	8:11	4:05
9	1635 Pennoyer	8:12	4:06
10	Eastern & Slayton	8:13	4:06
10 (p.m.)	15445 Mercury		4:32
11	404 Coburn	8:15	4:08
	Ferry	8:20	3:47
	Griffin	8:30	4:53
	White Pines	8:35	3:58



SCHOOL BUS



FERRY/GRIFFIN AREA ELEMENTARY-WHITE PINES AM/PM

continued

#6 Tiffany Strait(Village Green) Ferry / Griffin			
STOP	LOCATION	AM	PM
1	Timberview Apts. Sign	8:00	4:00
2	168th & Village Green	8:04	4:05
3	168th & Bluebird	6:50	4:06
4	Robbins & Robbins Nest Apt.	8:05	4:06
5	Village Green/1st ent.	8:08	4:08
6	Village Green/3rd ent	8:09	4:09
7	Robbins Rd. & 163rd	8:10	4:11
8	Robbins & Coleman (SE Cnr)	8:11	4:13
9	15311 160th	8:13	4:14
10	Robbins & David (NE Cnr)	8:16	4:17
11	Robbins & 161st (NE Cnr)	8:17	4:18
12	Robbins & Coleman (NE Cnr)	8:18	4:20
13	Robbins Rd. & Clovernook	8:19	4:22
14	Robbins & Pine St (NE Cnr)	8:21	4:23
15	Moreland & Burgess	8:22	4:25
16	Moreland & Bluff Cree	8:25	4:28
17	16128 Mercury Dr.	8:28	4:33
18	Robbins Rd. & Gillin	8:33	4:35
	Griffin	8:35	3:30
	White Pines		

#7 Greg VanCleave Ferry / Griffin / WP			
STOP	LOCATION	AM	PM
1	1542 Waverly	7:50	4:04
2	1718 Waverly	7:51	4:05
3	Robbins Rd & Deremo	7:52	4:08
4	15180 155th	7:53	4:09
5	15131 155th	7:54	4:10
6	15074 155th	7:55	4:11
7	14770 152nd	7:56	4:12
8	14927 152nd	7:58	4:13
9	15251 Cardinal	7:59	4:15
10	15380 Bluebird	8:00	4:16
11	15100 154th	8:02	4:17
12	Robbins Rd. & Widgeon	8:03	4:18
13	Robbins Rd. & Channel	8:04	4:19
14	Robbins Rd. & Kevin	8:05	4:20
15	Robbins Rd. & Lost Channe	8:06	4:21
16	15809 Robbins Rd.	8:07	4:22
17	15301 Cherry	8:08	4:25
18	15467 160th	8:09	4:26
19	16069 DeltaView	8:11	4:28
20	15613 Kitchel	8:13	4:30
21	1609 Waverly	8:15	4:32
	Ferry Elementary	8:28	
	Griffin Elementary	8:34	
	White Pines		

#57 Marlene Wilder Ferry / Griffin / WP			
STOP	LOCATION	AM	PM
1	13921 168th	7:45	4:09
2	15434 Lincoln	7:50	4:27
3	Lincoln & Hunters Wds.	7:51	4:28
4	12663 144th	7:54	4:30
5	Buchanan & Gaddin Ct.	7:58	4:33
6	16116 Warner	8:02	4:38
7	12157 152nd	8:05	4:40
8	152nd & Glendora Pl.	8:06	4:45
9	15325 Lincoln	8:08	4:46
10	15409 Lincoln	8:09	4:47
11	12902 Mariposa	8:10	4:17

12	15517 Bayberry	8:11	4:16
13	Woodrush & Woodrush Ct.	8:12	4:19
14	12996 Acacia	8:13	4:20
15	13014 Blackhaw	8:14	4:21
16	13080 Acacia	8:15	4:15
17	13172 Acacia	8:16	4:22
18	16025 Ferris	8:17	4:24
19	Johnson & Bittersweet	8:21	4:10
20	14098 168th	8:23	4:50
	Griffin	8:30	3:40
	White Pines	8:38	3:50

LAKE HILLS AREA SECONDARY AM/PM

#9 Dawn McPherson Lake Hills			
STOP	LOCATION	AM	PM
1	18984 174th	6:20	3:10
2	174th & Wilson	6:21	3:11
3	7254 Grand Haven Rd.	6:23	3:13
4	Pontaluna Shores Tr. Park	6:27	3:15
5	6713 Grand Haven Rd.	6:31	3:18
6	900 Judson	6:34	3:20
7	758 Judson	6:35	3:21
8	7365 Grand Haven Rd.	6:38	3:23
9	557 Wilson	6:41	3:25
10	629 Wilson	6:42	3:26
11	Wilson & Purchase	6:43	3:27
12	Grand River Polishing	6:44	3:28
13	18946 174th	6:46	3:30
14	North Key & 174th	6:48	3:31
15	18481 174th	6:50	3:32
16	Wildwood Spr. & Lost Pond	6:52	3:07
17	Wildwood Spr. & Shallow Spr.	6:53	3:06
18	Wildwood Spr. & Deer Ct.	6:55	3:05
	Lakeshore	7:10	2:50
	High School	7:20	2:43
	GH Christian - Grant St.		2:55

#12 Wes Collins Lake Hills			
STOP	LOCATION	AM	PM
PM			
1	180th & Hathaway Ct.	6:41	3:17
1 (p.m.)	Timberview Apts.		2:48
2	18219 Hickory	6:44	
3	18584 Iroquois Dr.	6:46	3:22
4	Sioux & Cree	6:47	3:24
5	Sioux & Winnebago	6:48	3:25
6	Winnebago & Aztec	6:49	3:26
7	18548 Aztec	6:50	3:28
8	Zuni & Pawnee	6:51	3:30
8 (p.m.)	18241 Hickory		3:20
9	18270 Hickory	6:53	
10	17676 Hickory	6:55	3:15
11	17527 Hickory	6:56	3:13
12	17301 Lane	7:00	3:08
13	17474 174th	7:01	3:07
14	17471 174th	7:02	
15	408 5th	7:03	3:06
15 (p.m.)	6975 Black Lake Rd.		3:35
16 (p.m.)	6790 Black Lake Rd.		3:36
	Lakeshore	7:13	2:55
	High School	7:28	2:36

#36 Kim Damaska Lake Hills			
STOP	LOCATION	AM	PM
1	520 174th Ave.	6:22	
2	17521 N. Shore Rd.	6:23	3:07
3	18470 N. Shore Rd.	6:31	3:28
4	17990 N. Shore Rd(Trailer Pk.)	6:40	3:20
4 (p.m.)	520 174th		3:06
5	Parkwood & Dunewood	6:42	3:10
6	Alpine Ct & Swiss Dr. Stop 1	6:44	3:13
7	Swiss Dr & Alpine Ct. Stop 2	6:45	3:14
8	Woodland Ridge (by post off)	6:47	3:16
9	18112 Alpine Ct	6:49	
9 (p.m.)	18109 Alpine Ct.		3:12
10	17838 N. Shore Dr.	6:51	
11	17710 N. Shore Dr.	6:52	3:08
12	17658 N. Shore Dr.	6:53	3:07
13	411 3rd Street	6:55	3:05
	High School	7:10	2:30
	Lakeshore	7:20	2:55

#45 Lake Hills			
STOP	LOCATION	AM	PM
1	170th & Short	6:50	3:06
2	Trapper Cove Apt.	6:51	3:05
3	Virginia & 168th	6:54	
3 (p.m.)	VanWagoner & 168th (church lot)		3:07
4	W.Sp.Lk.Rd. & Valley City	6:55	3:16
4 (p.m.)	Harbor Point & Suffolk		3:12
5	W.Sp.Lk.Rd. & Mary	6:56	
5 (p.m.)	Suffolk & Harbor Point		3:13
6	16242 Suffolk	6:59	
7	Harbor Point & Harbor View	7:00	
7 (p.m.)	W. Sp. Lk. Rd. & Jordan		3:15
8	W.Sp.Lk.Rd. & Rayborn	7:01	3:14
9	W.Sp.Lk.Rd. & Highland	7:03	3:18
9 (p.m.)	W. Sp. Lk. Rd. & 168th		3:17
10	Ridge & Hazel	7:05	3:20
11 (p.m.)	529 Ferry St.		3:19
	St. John's	7:12	2:20
	High School	7:20	2:30
	Lakeshore	7:25	2:45
	GH Christian - Grant St.		2:51

#50 Kristi Brown Lake Hills			
STOP	LOCATION	AM	PM
1	GH Rd. & The Hamptons	6:30	3:15
2	528 Farr Rd.	6:35	3:16
3	Martin & Boulder	6:38	3:18
4	Wintercreek & Windwater	6:39	3:19
4 (p.m.)	Farr Rd. & Martin		3:18
5	Windflower Way & Lk Haven	6:40	3:20
6	6824 Westshire	6:41	3:21
7	6655 Westshire	6:42	3:22
8	717 Pontaluna	6:47	3:26
9	Pontaluna & Timberbrook	6:48	3:27
10	Shoreline Landing	6:50	3:30
10 (p.m.)	671 Pontaluna		3:25
11	The Reserve	6:53	3:10
	Lakeshore	7:10	2:48
	High School	7:20	2:40

#55 Li Chan Lake Hills			
STOP	LOCATION	AM	PM
1	Dogwood (by Leppink's)	6:45	3:11
1PM	174th & Ridge St.		3:10
2	17898 Dogwood	6:46	3:14
3	Lake Hills Dr. & Hiawatha	6:47	3:16
4	Hiawatha & Swiss Dr.	6:48	3:17

5	18117 Mohawk	6:49	3:18
6	Cherokee & Cherokee Ct.	6:50	3:19
7	Cherokee & Yuma	6:51	3:20
8	17600 Navaho	6:52	3:22
9	17494 Hiawatha	6:53	3:23
10	17982 Mohawk	6:54	
11	17900 Mohawk	6:55	3:24
12	17784 Mohawk	6:56	3:25
13	17667 Dogwood	6:57	
14	17290 Roosevelt Rd.	6:58	
	Lakeshore	7:13	2:55
	St. John's Lutheran	7:15	
	High School	7:25	2:30
PM	GH Christian - Grant St.		3:00

LAKE HILLS AREA WHITE PINES ONLY

#12 5th & 6th Grades (Wes Collins)WP - LH AREA			
STOP	LOCATION	AM	PM
1	19044 174th	7:44	4:02
2	174th & Wilson	7:45	4:03
3	Pontaluna Shores	7:47	4:05
4	The Reserve	7:50	4:08
5	Pontaluna & Timberbrook	7:53	4:11
6	6727 Wood	7:54	4:12
7	Pontaluna & Harbor Pines	7:56	4:14
8	6900 Westshire	7:58	4:16
9	Wilmington & Westshire	8:00	4:18
10	146 Farr	8:02	4:20
11	The Hamptons	8:03	4:21
12	3588 Grand Haven Rd.	8:04	4:23
13	6758 Grand Haven Rd.	8:06	4:25
14	628 Wilson	8:07	4:27
15	18835 174th	8:09	4:29
16	Iroquis & Tomahawk	8:11	4:31
17	Souix & Cree	8:12	4:32
18	Souix & Iroquis	8:13	4:33
19	Pawnee & Zuni	8:14	4:34
20	Lake Hills Drive	8:17	4:36
21	18105 Wildwood Spr.	8:18	4:37
22	Green Daycare on 174th	8:20	4:38
	White Pines	8:29	

#24 5th & 6th Grades (Julie Weller)WP - LH AREA			
STOP	LOCATION	AM	PM
1	5TH & Beech	7:46	4:02
2	248 Carmen	7:47	4:03
3	17487 North Shore	7:48	4:05
4	North Shore Trailer Pk.	7:51	4:08
5	Parkwood & Dunewood	7:53	4:09
6	17511 Parkwood	7:54	4:10
7	Swiss & Alpine	7:56	4:12
8	Woodland Ridge Clubhouse	7:58	4:14
9	Woodland Ridge Mailboxes	8:00	4:16
10	Swiss & Oberwald	8:03	4:18
11	Cherokee & Yuma	8:05	4:19
12	Mohawk & Navaho	8:06	4:20
13	17349 Lane	8:08	4:22
14	17474 174th	8:09	4:23
15	Ridge & Hazel	8:11	4:24
16	Ferry & Willow	8:12	4:25
17	170th & Short	8:17	4:29
18	Harbor Point & Suffolk	8:21	4:32
19	W. Spr. Lk Rd. & Rayborn	8:22	4:33
20	17091 W. Spr. Lk. Rd	8:23	4:34
21	535 Pine	8:24	4:35
	White Pines	8:30	4:50



SCHOOL BUS



LAKE HILLS AREA ELEMENTARY

#9 STOP	Dawn McPherson LOCATION	AM	Lake Hills PM
1	17324 Hickory	7:50	4:00
2	557 Judson	7:54	4:31
3	6588 Boulder	7:58	4:18
4	63 Boulder	8:00	4:20
5	6308 Norfolk Dr.	8:02	4:22
5	569 Farr	8:04	4:23
6	The Hampton's (fire hydrant)	8:06	4:25
6 (p.m.)	Pontaluna & Harbor Pines	8:08	4:15
7	6301 Grand Haven Rd.	8:08	4:27
8	The Reserve (stop sign)	8:12	4:10
9	Pontaluna Shores Tr. Park	8:15	4:05
10	7365 Grand Haven Rd.	8:18	4:34
11	18835 174th	8:20	4:36
12	18735 174th	8:21	4:37
13	17405 Hickory	8:25	3:57
14	17676 Hickory	8:26	3:56
	Lake Hills	8:30	3:50

#36 STOP	Kim Damaska LOCATION	AM	Lake Hills PM
1	17521 N.Shore Rd.	7:49	4:14
1 (p.m.)	15187 174th	8:05	4:05
2	17575 N. Shore Rd.	8:50	4:15
3	N. Shore & Country Ln.	7:51	4:16
3 (p.m.)	517 5th St.	8:17	4:09
4	17906 N.Shore Estates Rd.	8:17	4:25
5	17990 N.Shore Trailer Park	8:10	4:18
6	17838 N. Shore Dr.	8:12	4:35
7	17658 N. Shore Rd.	8:13	4:37
8	248 Carmen	8:15	4:08
9	303 Beach St.	8:17	4:10
10	318 Maple St	8:19	4:11
11	508 5th St.	8:20	4:13
12	520 174th	8:22	4:13
	Lake Hills	8:30	4:00

#45 STOP	LOCATION	AM	Lake Hills PM
1	170th & Short	7:56	4:27
2	17753 168th	8:00	4:25
3	16844 Virginia	8:03	4:23
4	16775 Virginia	8:04	4:22
5	W. Sp. Lk. Rd. & Doric	8:05	4:12
6	W. Sp. Lk. Rd. & Mary	8:06	4:12
7	16323 Suffolk	8:09	4:15
8	Harbor Point & Suffolk	8:10	4:17
8 (p.m.)	535 Pine	8:12	4:03
9	W. Sp. Lk. Rd. & Rayburn	8:12	4:19
9 (p.m.)	17561 Reenders	8:13	4:08
10	W. Sp. Lk. Rd. & Bayberry	8:13	4:21
11	17091 W. Sp. Lk. Rd.	8:14	4:09
11 (p.m.)	17550 Doric	8:16	4:11
12	Willow & Ferry	8:16	4:01
13	Ridge & Hazel	8:17	4:00
14	17349 Lane	8:19	3:55
15	17474 174th	8:20	3:56
16	17525 Ridge & Michigan	8:21	3:57
16 (p.m.)	W. Sp. Lk. Rd. & Doric	8:25	4:20
17	17481 174th	8:25	3:51
18	17994 Wildwood Spr.	8:27	3:51
19	18101 Wildwood Spr.	8:28	3:50
	Lake Hills	8:30	3:15

#50 STOP	Kristi Brown LOCATION	AM	Lake Hills PM
1	709 Wilson Rd.	7:55	
2	557 Wilson Rd.	7:56	4:30
3	Pontaluna & Timberbrook	8:00	4:20
3 (p.m.)	Sioux & Tomahawk	8:05	3:57
4	Shoreline Landing	8:05	4:25
5	6523 Grand Haven Rd.	8:05	4:26
6	Pontaluna & Harbor Pines	8:08	
7	16 Wilmont	8:09	4:12
8	6695 Westshire Dr.	8:10	4:14
9	Westshire & Woodslee	8:11	4:14
10	6900 Windflower Way	8:12	4:15
11	Winter Creek & Moss Breeze	8:13	4:17
12	Winter Creek & Marsh Trail	8:14	4:18
13	Palm & Hoffmaster Dr.	8:17	4:07
14	Iroquois & Tomahawk	8:19	3:57
15	Sioux & Cree	8:20	3:58
16	Sioux & Winnebago	8:21	4:00
17	18716 Aztec	8:22	4:01
18	18735 Iroquois	8:23	4:02
19	18702 Pawnee	8:24	4:02
20	Pawnee & Zuni	8:25	4:03
21	18520 Shawnee	8:26	4:04
22	18219 Hickory	8:27	3:55
	Lake Hills	8:34	3:50

#55 STOP	Li Chan LOCATION	AM	Lake Hills PM
1	Dogwood (by Leppink's)	8:14	
2	17655 Navaho	8:16	
3	17829 Cherokee	8:17	
3 (p.m.)	Shady Ridge by Post Office	8:18	3:58
4	Cherokee & Yuma Ct.	8:18	4:12
5	17511 Parkwood Dr.	8:19	4:09
6	Parkwood @ 18210 Mohawk	8:20	4:10
7	18126 Mohawk	8:21	
8	Swiss & Oberwald	8:22	3:56
8 (p.m.)	17721 Hiawatha	8:23	4:06
9	Woodland Ridge Clubhouse	8:23	4:00
9 (p.m.)	18117 Mohawk	8:24	4:07
10	18288 Swiss Dr.	8:24	4:02
11	Alpine Court Clubhouse	8:25	4:03
12	18220 Swiss Dr.	8:26	4:04
13	Lake Hills & Hiawatha	8:27	3:55
13 (p.m.)	Cherokee & Navaho	8:28	4:14
14	Mohawk & Chief	8:28	4:16
15	17536 Hiawatha	8:30	4:18
16	17451 Hiawatha	8:31	4:19
17	17700 Navaho	8:32	4:15
18	17816 Dogwood Dr.	8:33	4:21
19 (p.m.)	17667 Dogwood Dr.	8:34	4:25
	Lake Hills	8:34	3:50

MARY A. WHITE AREA SECONDARY AM/PM

#11 STOP	Susan Yancer-Hatcher LOCATION	AM	MAW PM
1	Central High School	6:53	2:25
2	300 N. 6th St. (old Elliott school)	6:55	3:00
3	513 N. 5th	6:57	3:03
4	201 Elliott	6:58	3:05
5	2nd St & Howard	7:00	3:07
6	Lake & Elizabeth	7:01	3:09
7	Khardoma Lodge (Lake Ave)	7:02	3:11

8	Harbor & Emmet	7:05	3:14
	Lakeshore	7:10	2:56
	St. John's Lutheran High School	7:12	2:54
		7:23	2:42
PM	Central High School		2:58
#21 STOP	Brian Viening LOCATION	AM	MAW PM
PM	GH Christian – Grant St.	6:58	2:25
1	178th & Hillandale	6:58	3:16
2	178th & Comstock	6:59	3:15
2 (p.m.)	526 Slayton	7:00	2:41
3	178th & Brucker	7:00	3:14
3 (p.m.)	Clinton & 6th	7:02	2:44
4	177th & Comstock	7:02	2:56
4 (p.m.)	314 S. 2nd	7:04	2:46
5	Parkwood & Brucker	7:04	2:58
5 (p.m.)	Parkwood & Comstock	7:06	3:12
6	14385 Lakeshore	7:11	2:59
7	Lakeshore & Reenders Ct.	7:11	3:09
8	Lakeshore & Hideaway Dr.	7:12	3:11
9	Sheldon & Ohio	7:14	3:19
10	Grand & Gladys	7:16	3:21
11	Sheldon and Ottawa	7:18	
11 (p.m.)	Wisconsin & Ottawa	7:19	3:22
12	St. John's Lutheran Lakeshore	7:20	2:49
		7:20	2:50
13	14769 Lakeshore	7:25	3:13
14	Lakeshore & Tamarack	7:26	3:08
	High School	7:31	3:03
	Careerline Tech Center	7:40 (depart HS)	

MARY A. WHITE AREA ELEMENTARY-WHITE PINES AM/PM

#11 STOP	Susan Yancer-Hatcher LOCATION	AM	MAW PM
1	16 S. 8th	7:50	4:14
2	619 Washington	7:52	4:16
3	6th & Fulton	7:54	4:18
4	424 N. 6th	7:55	4:20
5	518 Adams St.	7:58	4:23
6	5th & Monroe	7:59	4:25
7	5th & Madison	8:01	4:28
8	405 Elliott	8:02	4:30
9	125 Elliott	8:03	4:31
10	211 Fulton	8:04	4:33
11	126 Lafayette	8:07	4:12
12	Leggatt St & Sherman	8:09	4:10
13	531 Lake	8:10	4:08
14	Central Open Door	8:13	3:51
15	Joyful Noise	8:15	3:53
	Mary A. White	8:25	3:45
	Lakeshore – Cutler St.	8:29	4:05
	White Pines	8:35	3:58

#51 STOP	Thereasa Klouw (River Haven) LOCATION	AM	MAW PM
1	Main ent. River Haven	7:56	4:10
2	1st ent. River Haven	7:58	4:12
3	2nd ent. River Haven	8:00	4:14
4	3rd ent. River Haven	8:01	4:16
5	14769 Lakeshore	8:11	4:26
6	Hideaway Blvd. (GH Club condos)	8:13	4:28
7	14697 177th	8:15	4:29
8	Maplewood St & 177th	8:17	4:36
9	Brucker & 178th	8:18	

9 (p.m.)	Brucker & Comstock		4:32
10	Comstock & 178th	8:19	4:33
11	178th & Oakhill	8:21	4:35
12	178th & Merrywood	8:22	
13	178th & Robbins Rd	8:23	4:36
14	Robbins Rd. & Westray	8:25	4:38
	Mary A. White	8:30	3:45
	White Pines	8:35	3:55

PEACH PLAINS AREA SECONDARY AM/PM

#13 STOP	Mike Yonker LOCATION	AM	Peach Plains PM
1	152nd & Millhouse	6:58	
1 (p.m.)	15309 Nickolas		3:06
2	152nd & Nickolas	6:59	
2 (p.m.)	15274 Arborwood		3:07
3	152nd & Arborwood	7:00	
3 (p.m.)	14385 152nd		3:08
4	13507 152nd	7:01	
5	13359 152nd	7:02	3:09
6	15315 Ferris	7:03	3:11
7	13314 Forest Park Dr.	7:04	3:12
7 (p.m.)	13425 Forest Park Dr.		3:13
8	13449 Forest Park Dr.	7:05	
8 (p.m.)	13491 Forest Park Dr.		3:14
9	Forest Park Dr. & Hofma Dr.	7:06	3:15
10	Forest Park Dr. & Thornapple	7:07	3:16
11	Forest Park Dr. & Royal Oak	7:08	3:17
12	Oak Chapel & Grand Oak	7:09	3:19
	High School	7:15	
	Lakeshore	7:25	

#14 STOP	LOCATION	AM	Peach Plains PM
1	15494 Mercury Dr.	6:55	3:28
2	15210 Mercury Dr.	6:57	3:30
3	15152 Lake	7:00	
4	Lake Ave. & Villa Ct.	7:01	3:18
5	15971 Lake	7:03	3:16
6	15900 Groesbeck	7:04	3:15
7	Groesbeck & Payne Forest	7:05	3:14
7 (p.m.)	Lake & 152nd		3:20
8	Groesbeck & 155th	7:06	3:13
9	15364 Groesbeck	7:07	3:12
10	15140 Groesbeck	7:08	3:21
11	Groesbeck & Bignell	7:09	3:22
12	14923 Mercury	7:10	3:23
13	Mercury & Ammeraal	7:11	
14	Mercury & Park	7:12	3:24
15	15279 Mercury	7:14	3:25
	High School	7:20	2:55
	Lakeshore	7:30	2:35

#46 STOP	Bill Doolittle LOCATION	AM	Peach Plains PM
1	15416 Ferris	6:47	3:03
2	152nd & Crosswalk	6:48	3:04
3	152nd & Steves Dr.	6:48	3:05
4	152nd & Evergreen Trails	6:49	3:05
5	Arborwood & East Park Ct.	6:50	3:06
6	Arborwood & Greenbriar	6:51	3:07
7	13493 Ravine View	6:53	3:08
8	Ravine View & Aspen	6:53	3:09
9	Ravine View & Briarwood	6:54	3:10
10	Ferris & Woodacre	6:55	3:11
11	Ferris & Willowvale	6:56	3:11



SCHOOL BUS



PEACH PLAINS AREA SECONDARY AM/PM

continued

12	13656 152nd	6:58	
13	13708 152nd	6:58	
14	14158 152nd	6:59	3:20
15	15246 Meadowwood	7:04	3:18
16	15341 Meadowwood	7:05	3:17
17	Hofma & Meadowwood	7:06	3:16
18	15387 Meadows	7:07	3:15
19	15318 Meadows	7:07	3:14
	High School	7:13	2:59
	Lakeshore	7:30	2:32

#51 Thereasa Klouw (River Haven) Peach Plains

STOP	LOCATION	AM	PM
1	16110 Comstock	6:43	
2	15760 Comstock	6:44	
3	14001 148th	6:49	3:00
4	13854 148th	6:50	3:02
5	14852 Woodside Trail	6:51	3:05
6	Woodside Tr. & Riverbluff Pl.	6:52	3:07
7	Riverside Pl. & Waterview Tr.	6:53	3:08
8	14913 Riverside Tr.	6:54	3:09
9	148th & Birdsong Ln.	6:55	3:1
10	3rd/ent. River Haven WP/HS	7:01	3:14
11	12896 152nd	7:10	3:17
	High School	7:15	2:50
	White Pines	7:20	2:50
	Lakeshore	7:25	2:40

#53 Jim Labron Peach Plains

STOP	LOCATION	AM	PM
1	Mercury & Robinwood Ct.	6:51	3:20
1 (p.m.)	16110 Comstock		3:10
2	Sharon & Charles Ct.	6:53	3:22
3	Comstock & Williams Way	6:54	3:23
4	14699 154th	6:55	3:26
5	154th & Cove	6:57	3:27
6	Comstock & Williams Way	7:00	3:30
7	Comstock & Indian Trails	7:01	3:32
8	160th @ Brucker	7:04	3:14
9	160th & O'Brien Ct.	7:05	3:12
9 (p.m.)	14749 154th		3:25
10	160th @ Gary St.	7:06	3:16
11	160th @ Ridgefield	7:08	3:18
	High School	7:20	3:05
	Ferry (Lakeshore)	7:27	2:51
	Lakeshore	7:35	2:35
PM	GH Christian		2:54

PEACH PLAINS AREA ELEMENTARY-WHITE PINES AM/PM

#13 Mike Yonker Peach Plains

STOP	LOCATION	AM	PM
1	13425 Forest Park Dr.	8:06	4:05
1 (p.m.)	Comstock & Williams Way		3:50
2	13488 Forest Park Dr.	8:07	4:04
2 (p.m.)	152nd & Grand Oak		3:54
3	13657 Forest Park Dr.	8:07	
4	13729 Hofma Dr.	8:08	
5	Thornapple & Forest Park	8:09	4:02
5 (p.m.)	Green Oak & Grand Oak		3:58
6	Forest Park Dr. & Royal Oak	8:11	4:01

7	15260 Forest Park Dr	8:12	3:55
8	15238 Grand Oak	8:14	
8 (p.m.)	Forest Park & Hofma Dr.		4:03
9	Oak Chapel & Green Oak	8:15	3:57
10	Great Oak & Grand Oak	8:16	
11	15348 Grand Oak	8:17	3:59
	Peach Plains	8:31	

#14 Peach Plains

STOP	LOCATION	AM	PM
1	15474 Mercury Dr.	8:08	4:01
2	15210 Mercury Dr	8:02	4:03
2 (p.m.)	15258 Mercury Dr.		4:23
3	15162 Lake	8:04	4:05
4	15566 Lake	8:06	4:07
5	15930 Groesbeck	8:08	4:10
6	Groesbeck & Payne Forest	8:09	4:11
7	Groesbeck & 156th	8:10	4:12
8	Groesbeck & 155th	8:11	4:13
9	15372 Groesbeck	8:12	4:15
10	15324 Groesbeck	8:13	4:16
11	152nd & Millhouse	8:15	4:18
12	15273 Nickolas	8:16	4:20
13	15404 Arborwood	8:17	4:21
14	15303 Arborwood	8:18	
15	13606 152nd	8:19	4:23
15 (p.m.)	15304 Arborwood		4:22
16	13976 152nd	8:21	4:24
17	14158 152nd	8:22	4:25
18	14918 Groesbeck	8:23	4:27
19	14862 Mercury	8:25	4:30
20	15044 Bignell Dr.	8:26	
21	15055 Bignell Dr.	8:27	4:32
	Peach Plains	8:30	3:35
PM	White Pines		3:50

#26 Karla Brown Robinson

STOP	LOCATION	AM	PM
1	156th & Lk. Michigan Dr.	6:12	3:00
2	14266 Rich	6:15	3:07
2 (p.m.)	11871 144th (A&L Farm)		3:05
3	14148 Rich	6:16	3:08
4	Richland Ct. & Rich	6:20	3:10
5	13921 Lk. Michigan Dr.	6:23	3:25
6	14171 Lk. Michigan Dr.	6:25	3:27
6 (p.m.)	13794 Rich St.		3:11
7	11020 144th	6:28	3:29
8	14715 Winans (Brady Farm)	6:31	3:30
9	148th & Evelyn Ct.	6:33	3:31
10	9690 144th	6:35	3:33
10 (p.m.)	Buchanan & Morel		3:17
11	10716 144th	6:38	3:35
12	11512 144th	6:40	
13	14136 Lincoln	6:44	
14	12615 136th	6:46	
15	12292 136th	6:48	3:14
16	12871 Buchanan	6:50	
16 (p.m.)	13388 Rich St.		3:23
17	11885 128th	6:52	3:18
18	11821 128th	6:54	3:19
19	11700 128th	6:56	3:20
20	13171 Rich St.	6:58	3:21
21	13535 Rich St.	7:02	
22	11716 136th	7:04	3:13
	Grand Haven Christian (Colfax)		2:25
	High School	7:11	2:50
	Lakeshore	7:20	2:36

#46 Bill Doolittle Peach Plains

STOP	LOCATION	AM	PM
1	12975 144th	8:03	4:04
2	14439 Lincoln	8:04	4:05
3	152nd & Steve's Dr.	8:08	4:09
4	15126 Arborwood	8:09	
4 (p.m.)	15170 Arborwood		4:10
5	Arborwood & Steamside	8:10	
5 (p.m.)	Arborwood & East Park Ct.		4:10
6	Greenbriar & Aspen	8:11	4:11
7	13493 Ravine View	8:12	4:13
8	Hawthorne & Greenbriar	8:13	4:15
9	13368 Ravine View	8:14	4:16
10	Ravine View & Briarwood	8:15	4:17
11	Ferris & Woodacre	8:16	4:18
12	13584 152nd	8:18	4:20
13	15318 Meadows	8:20	4:21
14	15387 Meadows	8:21	4:22
15	Hofma & Meadowwood	8:22	4:23
16	15341 Meadowwood	8:24	4:25
17	15213 Meadowwood	8:25	
17 (p.m.)	15228 Meadowwood		4:26
	Peach Plains	8:30	3:32
	White Pines (5&6)	8:35	3:51

#53 Jim Labron Peach Plains

STOP	LOCATION	AM	PM
1 (p.m.)	Peach Plains Elementary		3:56
1	Robbins Rd & David St.	7:53	4:00
2	Mercury & Robinwood Ct.	7:55	4:02
3	Comstock & Williams Way	8:00	
4	14617 Mercury Dr.	8:10	4:09
5	148th & Pineridge	8:12	4:10
6	14810 Woodside Trail	8:14	4:11
7	14878 Woodside Trail	8:15	4:11
8	Woodside Trail & Waterview	8:16	4:12
9	14936 Riverside Trail	8:18	4:13
10	Riverside Trail & Birdsong	8:19	4:13
11	Birdsong & 148th	8:20	4:14
12	14699 154th	8:25	4:04
13	15437 Comstock	8:26	
14	Comstock & Williams Wy.	8:27	
	Peach Plains	8:30	3:40
	White Pines	8:33	3:50

ROBINSON AREA SECONDARY AM

#31 Todd Green Robinson

STOP	LOCATION	AM	PM
1	144th & Unicorn	6:33	2:59
1 (p.m.)	144th @ Jacqueline Ct.		2:58
2	Devonshire & Osner	6:35	3:01
3	14200 Green	6:36	3:02
4	13762 Green St.	6:38	3:05
5	13135 Green St.	6:39	3:07
6	12444 Sleeper	6:43	3:11
7	Sleeper & Autumn	6:43	3:12
8	12178 Sleeper	6:44	3:13
9	14066 120th	6:45	3:15
10	120th & Cheyenne	6:46	3:16
11	14505 120th	6:46	3:17
12	12065 N. Cedar	6:47	3:18
13	12198 N. Cedar	6:48	3:19
14	12348 N. Cedar	6:49	3:21
15	12478 N. Cedar	6:50	3:22
16	12984 N. Cedar	6:52	3:24
17	128th & Setter St.	6:54	3:09

18	13835 128th	6:55	3:27
19	13729 128th	6:56	3:28
20	128th & Johnson	6:57	3:29
21	12876 Ferris	6:58	3:30
22	13296 Ferris	6:59	
23	13457 Ferris	7:00	3:35
23 (p.m.)	13210 Ferris (GH Christian Students)		3:32
24	Car on 136th @ Lincoln	7:03	
	Grand Haven Christian (Colfax)		2:28
	High School	7:12	2:50
	Lakeshore	7:23	2:35

#38 Carleen Pfeiffer Robinson

STOP	LOCATION	AM	PM
1	14246 Green St.	6:25	3:24
2	13790 Green St.	6:30	3:35
3	14159 132nd St..	6:32	3:39
3 (p.m.)	14245 Johnson		3:09
4	13994 132nd St.	6:36	3:41
5	13995 132nd St.	6:36	
5 (p.m.)	13960 Johnson		3:12
6	13956 132nd St.	6:37	
7	13798 132nd St.	6:37	
8	14398 128th St.	6:38	3:41
9	13211 Green St.	6:39	3:43
10	13678 & Franklin St.	6:40	3:36
10 (p.m.)	13769 Lincoln		3:18
11	14091 136th St.	6:41	
11 (p.m.)	13945 Lincoln		3:20
12	13211 Green St.	6:42	
12 (p.m.)	13793 Lincoln		3:20
13	River Haven/1st Ent.	6:44	3:05
14	Johnson & Oakfield	6:45	3:07
14 (p.m.)	144th & Mackinaw Trail		3:30
15	Johnson & 141st	6:46	3:10
15 (p.m.)	13890 144th		3:32
16	13523 136th St.	6:49	3:15
17	13314 136th	6:50	3:16
18	13244 136th	6:51	3:16
19	13011 136th	6:52	3:17
20	144th St. & Jacqueline Ct.	6:54	3:25
20 (p.m.)	14094 136th		3:37
21	13770 144th St.	6:56	
22	13992 144th	6:57	3:33
23	13726 144th	6:59	
24	14617 Mercury	7:00	3:46
26 (p.m.)	13797 Green Street		3:44
	High School	7:12	3:00
	Lakeshore	7:24	2:20
	Grand Haven Christian (Grant)		2:45
	White Pines	7:32	2:50

#47 Larry Casemier Robinson

STOP	LOCATION	AM	PM
1	12896 128th	6:30	3:23
2	13519 128th	6:32	3:24
3	12730 Johnson St.	6:33	3:25
4	Lauren Lane & Johnson	6:33	3:26
4 (p.m.)	12918 Lincoln		3:11
5	Johnson & Lightning Tree	6:34	3:27
5 (p.m.)	12838 Lincoln		3:11
6	12264 Johnson	6:34	3:28
7	12146 Johnson	6:35	3:28
8	13533 120th	6:36	3:30
9	13216 120th	6:37	3:31
10	Fernwood & 120th	6:38	3:31
11	North Star & Lincoln	6:39	3:19
12	Woodbriar & Lincoln	6:39	3:19
13	Sierra Way & Lincoln	6:40	3:20



SCHOOL BUS



ROBINSON AREA SECONDARY AM

14	Woodhaven & Lincoln	6:4	3:21
15	12769 Lincoln	6:41	3:21
16	12757 128th	6:42	3:12
17	12475 128th	6:43	3:13
18	Deadwood Tr. & 128th	6:44	3:13
19	12143 128th	6:45	3:14
20	12031 128th	6:46	3:15
21	12188 120th	6:50	3:16
22	12376 120th	6:51	3:17
23	12837 Lincoln	6:55	
24	12953 Lincoln	6:56	
25	13041 Lincoln	6:57	3:10
26	13568 Lincoln	6:58	3:09
27	13769 Lincoln	6:59	
28	14159 Lincoln	7:00	3:07
	High School	7:12	2:47
	St. Johns	7:20	2:17
	Lakeshore	7:22	2:22
	GH Christian-Grant St.	7:35	

#49 STOP	Ray Clover LOCATION	AM	Robinson PM
1	10124 Osborn	6:31	3:33
2	9691 S. Cedar	6:33	3:32
3	9964 Buchanan	6:35	3:30
4	12211 104th	6:38	3:27
5	12590 104th	6:39	3:25
6	end of Stump St.	6:40	3:26
7	12851 104th	6:42	3:24
8	TenBrink & Osborn	6:43	3:23
9	10688 Osborn	6:45	3:21
10	10935 Osborn	6:46	3:20
11	11065 Osborn	6:48	3:19
12	11165 Osborn	6:49	3:18
13	Tiburon & 112th	6:50	3:16
14	12454 112th	6:51	3:14
15	12320 112th	6:52	3:13
15 (p.m.)	10606 Osborn		3:22
16	12076 112th	6:53	3:12
17	11365 Buchanan	6:54	3:11
18	Buchanan & Oakridge	6:55	3:10
19	Buchanan & Reed	6:57	3:09
20	11815 Reed	6:58	3:08
21	11850 Pingree	6:59	3:07
	front of Robinson Elem.	7:00	3:05/3:48
	High School	7:17	2:50
	Lakeshore	7:28	2:32
	GH Christian	7:30	2:28

#56 STOP	Barbie VanHall LOCATION	AM	Robinson PM
1	Buchanan & Kinsmen	7:30	3:10
2	Buchanan & 124th	6:17	3:12
3	12101 Buchanan	6:19	
3 (p.m.)	Basketball & Buchanan		3:14
4	Buchanan & Sarabeck	6:23	3:16
5	10791 Buchanan	6:24	3:17
6	10474 Buchanan	6:25	3:18
7	Whitewood Dr. & 104th	6:29	3:21
8	10845 Lk. Michigan Dr.	6:33	3:24
9	11500 Lk. Michigan Dr.	6:38	3:28
10	200 ft. onto Pierce from 112th		
		6:43	3:31
11	120th & Blue Spruce	6:46	3:33
12	1st house 2nd drive on Fillmore		
		6:48	3:35

13	12255 Filmore	6:49	3:35
14	12551 Fillmore St.	6:50	3:36
15	9947 128th Ave.	6:52	3:38
16	12331 Rich St.	6:55	3:40
17	12253 Rich St.	6:56	3:41
18	Fallen Pine & Rich St.	6:57	3:42
19	11732 120th	7:00	3:43
	High School	7:10	
	Lakeshore	7:30	

#59 STOP	Bernie Curry LOCATION	AM	Robinson PM
	Robinson Elementary		
1	Lincoln & 116th	6:21	3:04
2	11327 Lincoln	6:23	3:05
3	11268 Lincoln	6:24	3:06
4	13212 104th	6:26	3:09
5	104th & Wydeck	6:27	3:11
6	13504 104th	6:28	3:12
7	104th & Sleeper	6:29	3:13
8	10348 N. Cedar	6:31	3:15
9	10537 N. Cedar	6:33	3:18
10	14467 108th	6:34	3:19
11	14150 108th	6:36	3:20
12	10597 Sleeper	6:37	3:23
13	11015 Johnson	6:40	3:26
14	11525 Johnson	6:42	3:28
15	11678 Johnson	6:43	3:29
16	11785 Johnson	6:44	3:30
17	11905 Johnson	6:40	
18	11731 Sleeper	6:46	3:33
19	11098 Sleeper	6:48	3:35
20	10815 Sleeper	6:49	3:37
21	11815 N. Cedar	6:53	3:40
22	11921 N. Cedar	6:54	3:41
	High School	7:10	2:50
	Lakeshore	7:20	2:25

ROBINSON AREA WHITE PINES ONLY AM/PM

#18 5th and 6th Gr. (Shaunna Holman) Rob / WP #2 STOP	LOCATION	AM	PM
1	13041 Lincoln	7:34	4:10
2	12887 Lincoln	7:35	4:11
3	12409 128th	7:36	4:12
4	12257 128th	7:37	4:13
5	12183 128th	7:38	4:14
6	12031 128th	7:40	4:15
7	Buchanan & Kinsman	7:41	4:17
8	Buchanan & 124th	7:42	4:18
9	12101 Buchanan	7:44	4:19
10	Robinson School	7:45	4:21
11	11758 Buchanan	7:46	4:22
12	Oakridge & Buchanan	7:47	4:23
13	12286 112th	7:47	4:24
14	Hidden Court & 112th	7:49	4:25
15	116th & Lincoln	7:51	4:27
16	10911 Osborn	7:52	4:28
17	10654 Osborn	7:53	4:29
18	Osborn & Tenbrink	7:56	4:30
19	10124 Osborn	7:59	4:31
20	9612 Lincoln	8:01	4:33
21	9693 South Cedar	8:03	4:35
22	9964 Buchanan	8:06	4:37
23	10763 Buchanan	8:07	4:38
24	11497 Buchanan	8:11	4:39
25	11903 Buchanan	8:14	4:40

26	12081 120th	8:15	4:42
27	12452 120th	8:16	4:43
28	12797 Lincoln (stop on 128th)		
		8:17	4:46
29	12452 128th	8:18	4:47
30	13457 Ferris	8:20	4:49
31	136th & Shady Tree	8:21	4:50
32	141st & Johnson	8:23	4:52
33	Oakfield & Johnson	8:24	4:53
34	14206 Mackinaw Trail	8:26	4:55
	White Pines	8:36	3:35

# 27 5th & 6th Gr. (Erin Chittenden) Rob / WP #1 STOP	LOCATION	AM	PM
1	14093 Lincoln	7:29	4:00
2	14048 Lincoln	7:30	4:01
3	12597 136th	7:32	4:03
4	12571 136th	7:33	4:04
5	12390 136th	7:34	4:05
6	Morel Lane & Buchanan	7:36	4:07
7	11846 128th	7:38	4:08
8	13388 Rich	7:39	4:09
9	13891 Rich	7:41	4:10
10	Richland Ct. & Rich	7:42	4:11
11	11393 144th	7:44	4:13
12	11020 144th	7:45	4:14
13	14786 Winans	7:46	4:16
14	15130 Winans	7:48	4:17
15	14780 Pierce	7:50	4:19
16	14628 Pierce	7:55	4:20
17	9690 144th	8:00	4:22
18	128th & Filmore	8:04	4:25
19	9947 128th	8:06	4:26
20	Blue Spruce & 120th	8:10	4:30
21	9665 120th	8:11	4:31
22	14171 Lk. Michigan Dr.	8:14	4:33
23	11512 144th	8:16	4:35
24	12535 144th	8:18	4:36
	White Pines	8:29	3:35

# 35 5th & 6th Gr. (Judy Davis) Rob / WP #3 STOP	LOCATION	AM	PM
1	13590 Green	7:28	4:05
2	Franklin & 136th	7:31	4:06
3	14078 128th	7:34	4:08
4	13605 128th	7:36	4:09
5	Johnson & Lauren Ln.	7:37	4:10
6	Johnson & Lightning Tree	7:38	4:11
7	12164 Johnson	7:39	4:12
8	13316 120th	7:40	4:13
9	120th & Deerfield	7:41	4:14
10	12949 120th	7:42	4:15
11	Lincoln & Woodbriar	7:44	4:17
12	Lincoln & 124th	7:45	4:18
13	Lincoln & Timberline	7:46	4:19
14	Lincoln & Sierra Way	7:47	4:20
15	13216 128th	7:49	4:21
16	13519 128th	7:50	4:22
17	13864 128th	7:51	4:23
18	12604 Sleeper	7:52	4:25
19	Sleeper & Autumn	7:54	4:26
20	Johnson & Alibright	7:55	4:28
21	11015 Johnson	7:58	4:29
22	108th & Sadie Trail	7:59	4:30
23	10846 Sleeper	8:00	4:31
24	Twin Oak & Sleeper	8:02	4:33
25	11701 Sleeper	8:03	4:34
26	13650 120th	8:05	4:35
27	14445 120th	8:09	4:36

28	14467 108th	8:10	4:37
29	108th & Brendan Ln.	8:11	4:40
30	14151 104th	8:13	4:42
31	10348 N. Cedar	8:15	4:43
32	10495 N. Cedar	8:17	4:44
33	N. Cedar & 118th	8:18	4:45
34	12290 N. Cedar	8:19	4:46
35	N. Cedar & 124th	8:20	4:47
36	12984 N. Cedar	8:21	4:48
37	13135 Green	8:24	4:50
38	13387 Green	8:25	4:51
	White Pines	8:35	3:35

ROBINSON AREA ELEMENTARY AM/PM

#26 STOP	Karla Brown LOCATION	AM	Robinson PM
1	11871 144th (A&L Farms)	7:42	4:35
2	11421 144th	7:43	4:17
3	144th & Antoinette Ct.	7:44	4:18
3 (p.m.)	13467 Buchanan		4:03
4	11251 144th	7:45	4:19
5	14715 Winans (Brady Farm)	7:48	4:21
6	15130 Winans	7:51	4:23
7	148th & Evelyn Dr.	7:54	4:24
8	14786 Pierce	7:55	4:25
9	9690 144th (near Fillmore)	8:00	4:26
10	14135 Lk. Michigan Dr.	8:01	4:31
11	14191 Lk. Michigan Dr.	8:02	4:32
12	14255 Lk. Michigan Dr.	8:03	4:33
13	14300 Rich	8:05	4:15
14	11990 144th	8:07	
15	12440 144th	8:08	4:37
16	12716 144th	8:09	4:39
17	12716 144th	8:09	
18	13590 Lincoln	8:11	4:42
19	12597 136th	8:12	4:00
20	12390 136th	8:13	4:02
21	Buchanan & Harmony Ln.	8:15	4:04
22	Buchanan & Morel Rd.	8:16	4:05
23	11956 128th	8:17	4:07
24	128th & Carson Court	8:18	4:08
25	11885 128th	8:19	4:09
26	12939 Rich St.	8:20	4:11
26 (p.m.)	11996 144th		4:36
27	13891 Rich St.	8:22	4:13
28	Rich & Richland Ct	8:24	4:14
29	13388 Rich St.	8:25	4:12
	Robinson	8:38	3:45

#31 STOP	Todd Green LOCATION	AM	Robinson PM
1	13773 Green St.	7:52	4:28
2	13643 Franklin	7:54	4:21
3	13701 Franklin	7:55	4:22
4	13685 Stearns	7:57	4:25
5	14262 138th	7:58	4:26
6	14159 132nd	8:00	
7	12446 N. Cedar	8:04	4:10
8	12348 N. Cedar	8:05	4:11
9	14445 120th	8:07	4:12
10	120th & Cheyenne	8:08	4:13
11	Sleeper & Autumn	8:10	
12	14100 128th	8:11	4:04
12 (p.m.)	14066 120th St.		4:14
13	12984 N. Cedar	8:13	4:06
13 (p.m.)	12805 Green St.		4:17
14	Lincoln @ Liberty	8:18	3:55



SCHOOL BUS



ROBINSON AREA ELEMENTARY AM/PM

continued

14 (p.m.)	St. Anthonys Church	4:19	
15	13041 Lincoln	8:19	3:56
16	14093 Lincoln	8:21	
17	144th & Unicorn	8:22	
17 (p.m.)	End of Franklin		4:23
18	Johnson & Oakridge – Woodlands Ent.	8:24	
19	12982 Ferris	8:28	4:01
20	13094 128th St. Robinson	8:30	8:35

#47 STOP	Larry Casemier LOCATION	AM	Robinson PM
1	13590 Lincoln	8:11	
2	12735 128th	8:12	4:05
3	12409 128th	8:13	4:06
4	12257 128th	8:14	4:06
5	12183 128th	8:15	4:07
6	12031 128th	8:16	4:08
7	12376 120th	8:20	3:57
8	Lincoln & North Star	8:21	3:59
9	Woodbriar & Lincoln	8:22	4:01
10	124th & Lincoln	8:23	4:02
11	12797 Lincoln & 128th	8:24	
11 (p.m.)	13590 128th		4:10
12	13094 128th	8:25	4:14
12 (p.m.)	12881 128th		4:12
13	13282 128th	8:26	4:14
13 (p.m.)	Madgic Dr. & 128th		4:13
14	13419 128th	8:27	4:15
15	13545 128th	8:27	4:16
16	Johnson & 128th (stop on 128th)	8:28	4:16
17	Johnson & Lauren Ln	8:28	4:17
18	Johnson & Lightning Tree	8:29	4:18
19	12164 Johnson	8:30	4:19
20	12155 Johnson	8:30	4:19
21	12079 Johnson	8:31	4:20
22	13408 120th	8:31	4:21
23	13316 120th	8:32	4:22
24	Joshua & 120th	8:33	4:23
25	12949 120th	8:33	4:23
28 (p.m.)	14093 Lincoln		4:28
29 (p.m.)	144th & Unicorn		4:31
30 (p.m.)	Johnson & Oakfield		4:33
31 (p.m.)	Johnson & 141st Robinson	8:40	4:24

#49 STOP	Ray Clover LOCATION	AM	Robinson PM
1	10688 Osborn	8:13	4:15
2	10606 Osborn	8:14	4:17
3	Cnr. 104th & Stump		8:15
4	12211 104th	8:17	4:19
5	9635 Lincoln	8:20	
6	10911 Osborn	8:22	4:23
7	11015 Osborn	8:23	4:24
8	11065 Osborn	8:24	4:25
8 (p.m.)	11941 Barnard		4:09
9	11165 Osborn	8:25	4:26
10	112th & Hidden Court	8:26	4:13
11	12436 112th	8:27	4:12
12	12076 112th	8:28	4:11
13	Buchanan & Oakridge	8:30	4:10

14	11894 Barnard	8:31	
15	11856 Barnard	8:32	4:07
15 (p.m.)	10678 Stump		4:18
16	Barnard & Pingree	8:33	4:06
17	11824 Reed	8:34	4:01
17 (p.m.)	9612 Lincoln		4:22
18	11910 Reed	8:35	4:03
19	11903 Buchanan	8:36	4:04
20	11724 Buchanan	8:37	4:05
21	11796 Pingree Robinson	8:38	4:00
		8:40	

#56 STOP	Barbie VanHall LOCATION	AM	Robinson PM
1	12706 Buchanan	7:50	4:08
2	Buchanan & Kinsman	7:50	4:08
3	12455 Buchanan	7:51	4:09
3 (p.m.)	12331 Rich St.		4:04
4	Buchanan & 124th Ave.	7:52	4:10
5	Buchanan & Sara Beck	7:59	4:15
6	10763 Buchanan (blue sign)	7:59	4:16
7	10524 Buchanan	8:01	4:17
8	Drift Boat & 104th	8:06	4:20
9	10845 Lk MI Dr. (Nursery)	8:10	4:24
10	11391 112th Ave.	8:15	4:27
11	11500 Lk Michigan Dr.	8:16	4:29
12	11446 Lk Michigan Dr.	8:16	4:29
13	11262 Pierce St.	8:20	4:30
14	Blue Spruce Ln & 120th Ave.	8:22	4:32
15	1st house/2nd drive @ Fillmore	8:24	4:34
16	200 feet on 128th Ave.	8:26	4:38
17	10418 128th Ave.	8:28	4:41
18	Rich St & 125th Ave	8:32	4:05
19	12390 Rich St.	8:32	4:05
20	12301 Rich St.	8:33	4:03
21	12253 Rich St.	8:35	4:03
25 (p.m.)	11732 120th Ave. Robinson		4:43
		8:40	

#59 STOP	Bernie Curry LOCATION	AM	Robinson PM
1	Lincoln & 116th	7:52	4:02
2	11287 Lincoln	7:53	4:04
3	104th & Sleeper	7:57	4:09
4	14191 104th	7:58	4:11
5	10348 N. Cedar	7:59	4:12
6	10102 N. Cedar	8:00	4:14
7	10589 N. Cedar	8:04	4:17
8	10889 N. Cedar	8:05	4:18
9	14733 118th	8:07	4:22
10	14663 118th	8:09	4:23
11	11815 N. Cedar	8:10	4:24
12	11887 N. Cedar	8:11	4:25
13	13909 120th	8:14	4:28
14	13681 120th	8:15	4:30
15	13660 120th	8:16	4:33
16	11731 Sleeper	8:18	4:36
17	11667 Sleeper	8:19	4:37
18	Johnson & Twin Oaks	8:20	4:39
19	10846 Sleeper	8:23	4:41
20	10781 Sleeper	8:24	4:42
21	14467 108th	8:27	4:45
22	14193 108th	8:28	4:46
23	108th & Brenden Lane	8:29	4:47
24	14091 108th	8:30	4:48
25	108th & Sharp Dr.	8:31	4:49
26	10597 Sleeper	8:32	4:50
27	10509 Johnson	8:35	4:51

28	11689 Johnson Robinson	8:37	8:41	4:53
----	------------------------	------	------	------

ROSY MOUND AREA SECONDARY AM

#23 STOP	Ruth Lakatos LOCATION	AM	Rosy Mound PM
1	9451 146th	6:28	3:20
2	15405 Fillmore	6:32	3:16
2 (p.m.)	Lincoln & Summerset		2:56
3	15495 Fillmore	6:34	
4	16305 Pierce	6:37	3:05
5	Hiawatha & Hiawatha Circle	6:41	3:10
6	9541 Hiawatha	6:42	
7	16387 Stanton	6:44	3:28
8	Stanton & Reyes	6:45	3:27
9	15665 Stanton	6:48	3:25
10	160th & Raven's Edge	6:49	
11	Fillmore & Cole Lane	6:50	3:14
12	9760 168th	6:52	
12 (p.m.)	Hiawatha & Donahue Ct.		3:11
13	168th & Pierce	6:55	3:04
13 (p.m.)	Hiawatha & Fillmore		3:12
14	11325 168th	6:58	3:03
14 (p.m.)	Fillmore & 168th		3:12
15	11667 168th	6:59	3:02
15 (p.m.)	Fillmore & Cottontail		3:13
16	11803 168th	7:00	3:01
17	168th & Cricket	7:01	3:00
17 (p.m.)	Fillmore & 160th		3:14
18	168th & Pine Dunes Ct.	7:02	2:58
19	12453 168th	7:03	2:57
20	Lincoln & Sanctuary Pl.	7:05	2:55
20 (p.m.)	146th & Stanton		3:21
21	17101 Lincoln	7:05	
21 (p.m.)	15420 Stanton		3:25
23 (p.m.)	15838 Stanton		3:26
	High School	7:08	2:50
	Lakeshore	7:18	2:40
	Rosy Mound	7:30	
	GH Christian (Colfax)		2:25
	St. Johns		2:35

#32 STOP	Penny Goldberg LOCATION	AM	Rosy Mound PM
1	10836 152nd	6:25	3:19
2	10367 152nd	6:27	3:20
3	15621 Winans	6:28	3:23
4	10420 158th	6:33	3:17
4 (p.m.)	Buchanan & Chickory Dr.		3:04
5	10668 158th	6:32	3:16
6	15801 Winans	6:34	3:11
7	15958 Winans	6:35	3:11
8	15906 Winans	6:36	3:10
9	15774 Winans	6:36	
10	15608 Lk. Michigan Dr.	6:39	3:18
11	11268 156th	6:40	3:25
12	11455 156th	6:41	3:27
12 (p.m.)	15713 Pierce		3:13
13	11527 156th	6:41	3:27
14	11707 152nd	6:43	3:29
15	152nd & Rich St.	6:44	3:29
16	11583 144th	6:46	3:31
17	11457 144th	6:47	3:31
18	144th & Antoinette Ct.	6:48	3:32
19	14523 Lk Michigan Dr.	6:50	3:34
20	15887 Lk Michigan Dr.	6:52	3:36

21	16877 Buchanan	6:55	3:07
22	16977 Buchanan	6:56	3:06
23	17067 Buchanan	6:57	3:06
24	Buchanan & Mistral Ln	6:58	3:05
25	Buchanan & Sandy Wd	6:58	
26	17300 Timberdunes	7:00	3:02
27	17120 Timberdunes	7:01	3:01
28	16922 Timberdunes	7:03	3:00
	High School	7:12	2:56
	Lakeshore	7:22	2:30

#44 STOP	Diane Dykstra LOCATION	AM	Rosy Mound PM
1	Croswell & Alpha	6:29	3:30
2	Sandy Point Beach House	6:35	3:22
3	Olive Shores & Beachview	6:38	3:15
3 (p.m.)	Lakeshore & Rolling Dunes		3:09
4	Margaret & Mountain Beach	6:40	3:19
4 (p.m.)	Lakeshore & Stanton		3:11
5	17115 Stanton	6:46	
6	16726 Stanton	6:47	3:38
7	16048 Taylor	6:50	3:36
8	8695 160th	6:51	3:35
9	Croswell & Hiawatha	6:53	3:27
9 (p.m.)	Lakeshore & Tenhagen		3:23
10	8954 Lakeshore Dr.	6:55	3:12
11	9140 Lakeshore Dr.	6:56	
12	9384 Lakeshore Dr.	6:57	
12 (p.m.)	Croswell & 156th		3:31
13	9421 Ottawa House	6:58	
14	Lakeshore Dr. & Fillmore	7:00	3:08
15	9986 Lakeshore & Beach Rdg.	7:01	3:07
	High School	7:12	3:00
	St. John's Lutheran	7:22	2:30
	Lakeshore	7:25	2:39

#52 STOP	Marilyn LeClair LOCATION	AM	Rosy Mound PM
1	Lk MI Dr. & Evert Ct.	6:45	3:14
2	Lk MIDr. & Preserve	6:46	
3	11304 Oak Grove	6:48	3:17
4	11564 Oak Grove	6:48	
5	11730 Lakeshore Dr.	6:49	
6	Garnsey & Juniper Hills	6:50	3:21
7	Garnsey & Whippoorwill	6:51	3:22
8	17433 Buchanan	6:52	3:24
9	12182 Lakeshore Dr.	6:53	3:26
10	17574 Buchanan	6:54	3:25
11	12200 Lakeshore	6:56	
12	12462 Lakeshore	6:57	3:27
13	Lakeshore & Burkshire	6:59	3:09
14	13146 Lakeshore Dr.	7:01	
15	13330 Lakeshore Dr.	7:02	2:58
15 (p.m.)	Lakeshore & Beech Hill		3:08
16	13444 Lakeshore Dr.	7:03	
17	13658 Lakeshore Dr.	7:04	
18	13734 Lakesedge	7:05	2:53
18 (p.m.)	16285 Lake Michigan Dr.		3:15
19	13818 Lakesedge	7:06	2:54
20	13751 Cottage	7:07	2:55
20 (p.m.)	11437 Oak Grove		3:18
21	13752 Lakeshore	7:08	
21 (p.m.)	Oak Grove & Lakeshore Dr.		3:19
22	13655 Lakeshore	7:10	2:56
22 (p.m.)	Lakeshore & Loggers Trail		3:20
23	Lakeshore & Duneside	7:11	2:57
24	13297 Lakeshore	7:12	2:59
25	13139 Sikkema	7:13	3:00
26	12950 Sikkema	7:14	3:01



SCHOOL BUS



ROSY MOUND AREA SECONDARY AM *continued*

27	17213 Ferris	7:15	3:02
28	13431 Greenleaf	7:16	3:03
29	13544 Redbird	7:17	3:04
30	Fox Ridge & Finch	7:18	3:05
	GHHS	7:20	3:06
	Lakeshore	7:26	2:35
	Rosy Mound Drop Off		2:51
	Grand Haven Christian	7:35	2:20

ROSY MOUND AREA WHITE PINES ONLY

#5 5th and 6th Gr. (Mike Millering) RM / WP #2			
STOP	LOCATION	AM	PM
1	Crosswell & Alpha Ct.	7:33	4:32
2	15954 Crosswell	7:34	4:33
3	8534 160th	7:35	
3 (p.m.)	Winans & 168th		4:13
4	16345 Crosswell	7:39	4:37
5	Sandy Pt/Pigeon Lake Lodge	7:42	4:42
6	9140 Lakeshore	7:45	4:46
7	17144 Stanton	7:46	4:47
8	16938 Stanton	7:47	4:48
9	Stanton & 160th	7:48	4:49
10	15665 Stanton	7:51	4:50
11	10357 Lakeshore	7:59	4:16
12	Lakeshore & Beach Rdg. Wy.	8:00	4:17
13	Lakeshore & Hidden Treasure	8:01	4:18
13 (p.m.)	Fillmore & 160th		4:26
14	9384 Lakeshore	8:03	4:20
14 (p.m.)	15886 Fillmore		4:27
15	10108 Lakeshore	8:04	4:22
16	Hiawatha & Hiawatha Circle	8:06	4:23
17	Hiawatha & Donahue	8:07	4:24
18	16304 Fillmore	8:09	4:25
19	Fillmore & Cole Lane	8:09	4:26
20	9623 160th	8:10	4:34
21	10420 158th	8:12	4:10
22	10705 158th	8:13	4:11
23	10815 168th	8:15	
	White Pines	8:30	

#38 5th and 6th Gr. (Carleen Pfeiffer) RM / WP #1			
STOP	LOCATION	AM	PM
1	M-45 & Evert Ct.	7:40	4:15
2	16263 M-45	7:41	4:16
3	11220 Oak Grove	7:44	4:18
4	11454 Oak Grove	7:45	4:19
5	Whippoorwill & Garnsey	7:47	4:21
6	11840 Garnsey	7:48	4:22
7	11943 Garnsey	7:49	4:22
8	Buchanan & Sandy Wds.	7:51	4:24
9	Buchanan & Minstral	7:52	4:25
10	17087 Buchanan	7:53	4:26
11	16977 Buchanan	7:53	4:27
12	168th & Cricket Ct.	7:55	4:28
13	11805 168th	7:56	4:29
14	11667 168th	7:57	4:30
15	168th & Pine Dunes Ct.	8:01	4:33
16	16955 Timberdunes	8:03	4:35
17	12462 Lakeshore	8:05	4:37
18	Lakeshore & Berkshire	8:07	4:38
19	13139 Sikkema	8:08	4:39
20	13061 Sikkema	8:09	4:39
21	Fox Chase & Finch	8:11	4:41
22	13345 Redbird	8:12	4:41
23	Greenleaf & Lakeshore	8:13	4:42
24	13818 Lake Sedge	8:15	4:43
25	13751 Cottage Dr.	8:16	4:44
26	Lakeshore & Duneside	8:18	4:46
27	13297 Lakeshore	8:20	4:47
28	Lakeshore & Beech Hill	8:21	4:48
29	17150 Lincoln	8:23	4:50
30	Lincoln & Sanctuary	8:23	4:51
	White Pines	8:30	

ROSY MOUND AREA ELEMENTARY AM / PM

#23 Ruth Lakatos Rosy Mound			
STOP	LOCATION	AM	PM
1	9451 146th	7:52	4:37
2	15912 Fillmore	7:56	4:33
3	160th & Raven's Edge	7:57	4:32
4	15784 Taylor	7:59	4:28
5	15665 Stanton	8:02	4:31
6	Stanton & Reyes	8:03	4:26
7	Stanton & Red Pine Trail	8:04	4:25
8	16301 Stanton	8:05	4:24
9	9632 160th	8:07	4:21

10	16305 Pierce	8:10	4:19
11	Lakeshore & Beach Rdg. Wy.	8:13	4:05
12	9501 Lakeshore Dr	8:14	4:06
13	17341 Rolling Dunes	8:15	4:07
14	17229 Sheldon Dune	8:16	4:09
15	9384 Lakeshore Dr.	8:18	4:10
16	Lakeshore Dr. & Majestic Ct.	8:20	4:12
17	Hiawatha & Hiawatha Circle	8:21	4:14
18	Hiawatha & Donahue	8:22	4:15
19	9760 168th	8:24	4:17
20	10816 168th	8:26	4:02
21	M-45 & Preserve	8:28	4:00
	Rosy Mound	8:35	3:50

#32 Penny Goldberg Rosy Mound			
STOP	LOCATION	AM	PM
1	15801 Winans	7:50	4:11
2	15906 Winans	7:52	4:13
3	10705 158th	7:55	4:14
4	15568 Winans	7:58	4:17
5	15421 Lk. Michigan Dr.	8:00	4:19
6	11268 156th	8:02	4:21
6 (p.m.)	Buchanan & Chickory		4:00
7	11455 156th	8:03	4:23
8	11579 156th	8:03	4:23
9	11855 152nd	8:06	4:26
10	11906 152nd	8:08	4:28
11	14523 Lk. Michigan Dr.	8:11	4:33
12	168th & Fox Chase Circle	8:15	4:05
13	16882 Buchanan	8:17	4:03
14	16977 Buchanan	8:17	4:02
15	17087 Buchanan	8:18	4:01
16	Buchanan & Mistral Ln.	8:18	4:01
17	Buchanan & Sandy Wds. Dr.	8:20	
18	17150 Lincoln	8:22	3:53
19	Lincoln & Sanctuary Place	8:23	3:54
20	12831 Summerset Dr.	8:25	3:55
21	16804 Watersedge Dr.	8:26	3:56
22	17107 Lincoln	8:28	3:57
23	152nd & Rich St.		3:29
24	11583 144th		3:31
25	11457 144th		3:31
26	144th & Antoinette Ct.		3:32
27	14523 Lake Michigan Dr.		3:34
28	15887 Lake Michigan Dr.		3:36
	Rosy Mound	8:33	3:44

#44 Diane Dykstra Rosy Mound			
STOP	LOCATION	AM	PM
1	11057 Lk. MI Dr. (Pondview)	7:45	
2	15570 Crosswell	7:53	
3	Crosswell & Alpha Ct.	7:54	4:32
4	16345 Crosswell	7:56	4:35
5	17144 Stanton	8:01	4:20
6	17039 Stanton	8:02	4:21
7	9121 Hiawatha	8:05	4:23
7 (p.m.)	10557 Lakeshore		4:10
8	16052 Taylor	8:06	4:25
9	8534 160th	8:07	4:27
10	8455 160th	8:08	4:28
11	Sandy Pt. Beach House	8:12	4:14
12	9140 Lakeshore	8:16	4:19
13	Lakeshore & Sandgate	8:18	
14	11354 Oak Grove	8:20	4:07
15	11454 Oak Grove	8:21	4:06
16	11571 Oakgrove	8:22	4:05
16 (p.m.)	15954 Crosswell		4:29
17	13531 Redbird	8:25	3:58
17 (p.m.)	Crosswell & 156th		4:30
18	13387 Redbird	8:26	3:56
19	Finch & Foxridge	8:27	3:55
	Rosy Mound	8:30	3:45

#52 Marilyn LeClair Rosy Mound			
STOP	LOCATION	AM	PM
1	14385 Lakeshore Dr.	8:00	3:55
1 (p.m.)	14496 Lakeshore Dr.		3:53
2	13351 Lakeshore Dr.	8:02	4:02
2 (p.m.)	Westwind & Tamarack		3:54
3	11730 Lakeshore Dr.	8:06	4:17
4	11768 Lakeshore Dr.	8:07	4:18
4 (p.m.)	13745 Lakesedge		3:58
5	12069 Lakeshore Dr.	8:08	4:20
6	12182 Lakeshore Dr.	8:10	4:21
7	12312 Lakeshore Dr.	8:11	
8	16975 Timberdunes	8:13	4:13
9	12453 168th	8:14	4:12
10	Lakeshore & Berkshire	8:17	4:04
11	13178 Lakeshore Dr.	8:18	4:05
12	13139 Sikkema	8:19	4:06
13	12983 Sikkema	8:20	4:07
14	12902 Sikkema	8:21	4:08
15	13330 Lakeshore Dr.	8:23	4:09
16	13818 Lake Sedge Dr.	8:25	3:59
17	13783 Cottage Dr.	8:26	4:00
17 (p.m.)	17070 Timberdunes		4:14
18	13733 Cottage Dr.	8:27	4:01
19 (p.m.)	12444 Lakeshore Dr.		4:23
	Rosy Mound .	8:29	3:47



For more information,
please contact the
Transportation Department
at 616.850.5150.